



COMMISSION
Twenty-Second Regular Session
1-5 December 2025
Manila, Philippines (Hybrid)

Catch and Effort Data Summaries to Support Discussions on the Tropical Tuna CMMs

WCPFC22-2025-IP13

4 November 2025

**Paper prepared by the Oceanic Fisheries
Programme (OFP), Pacific Community (SPC) and the
Secretariat**

Table of contents

Purse seine fishery information	2
Longline fishery information	30
Pole-and-line	43
Archipelagic catches	47
Other Commercial Fisheries	48
Management Procedures and Fishery Monitoring	49

Purse seine fishery information

Table 1: Purse seine days fished in waters under national jurisdiction and in the high seas

EEZ	2001	2002	2003	2004	2005	2006	2007	2008	2009	2010	2011	2012	2013	2014	2015	2016	2017	2018	2019	2020	2021	2022	2023	2024	2024 Limit	Notes	
AUSTRALIA	23	14	24	9	0	2	0	1	0	0	0	0	0	0	0	0	0	0	0	0	0	0	0	0	#	2, 9, 15	
COOK ISLANDS	46	216	8	6	2	8	3	30	46	17	103	478	208	356	344	200	525	684	608	343	110	84	167	100	1250	2, 15	
FIJI	12	5	10	26	34	6	6	23	12	28	27	27	32	0	49	44	31	3	12	0	0	0	0	0	300	2, 15	
FRENCH POLYNESIA	0	2	0	0	0	0	0	0	0	0	0	0	0	0	0	1	0	0	0	0	0	0	0	0	0	0	2, 15, 18
INDONESIA	398	380	421	562	704	657	413	279	286	211	444	1,116	2,034	1,274	945	1,846	2,263	591	959	995	998	954	1,199	1,478	70820	2, 4, 16	
JAPAN	2,203	2,992	2,249	2,190	1,757	1,678	2,028	1,533	1,445	1,701	204	302	465	197	653	641	670	349	416	415	636	331	539	445	1500	2, 9, 10, 13, 15,	
NEW ZEALAND	218	174	167	313	359	218	217	234	128	218	261	268	290	268	278	197	152	110	123	93	118	0	0	0	#	2, 9, 15	
NIUE	0	0	1	0	0	0	0	0	0	0	1	0	0	0	0	0	0	0	0	0	0	0	0	0	200	2, 15	
PHILIPPINES	755	831	1,144	1,189	990	1,158	1,098	1,342	874	623	384	341	320	310	177	215	303	115	258	312	280	210	228	193	*	2,4,6,8,17,18	
REPUBLIC OF KOREA	0	0	0	0	0	0	0	0	0	0	0	0	0	0	0	0	0	0	0	0	0	0	0	0	*	2, 18	
SAMOA	8	12	4	2	3	2	4	7	13	7	38	31	45	14	31	85	12	5	4	15	9	8	0	0	150	2, 15	
CHINESE TAIPEI	0	0	0	0	0	0	0	0	0	0	0	0	0	0	0	0	0	0	0	0	0	0	0	0	*	2	
TOKELAU	99	364	25	67	117	30	45	132	210	185	863	718	386	636	1,306	184	739	894	209	419	170	87	116	243	1000	2,13,15	
TONGA	2	0	0	1	1	0	0	0	0	0	0	0	2	0	2	19	11	0	0	0	0	0	0	0	250	2, 15	
USA	338	470	227	296	141	195	98	63	119	35	48	206	189	255	86	109	138	107	79	138	125	150	80	88	558	2, 15	
VANUATU	2	2	0	19	1	0	0	14	1	0	5	5	1	0	4	0	1	0	0	6	0	0	0	0	200	2, 15	
WALLIS AND FUTUNA	5	9	6	1	4	2	0	7	8	2	3	2	0	1	0	0	0	0	0	0	0	0	0	0	*	2, 18	
INT WATERS (20N-20S)	6,848	7,556	7,917	9,834	8,337	6,315	7,587	8,105	9,494	1,441	1,478	2,359	6,104	5,658	8,172	6,913	6,573	7,327	8,405	7,748	6,546	5,163	7,061	5,255			
PNA EEZs	24,916	26,933	29,225	30,209	32,216	32,112	31,619	34,573	32,977	44,158	47,311	41,778	44,201	42,441	30,885	35,582	36,980	34,780	33,008	32,838	34,520	33,660	31,262	34,128	44033	5,12,13	
PNA AWs	2,422	2,223	3,540	3,058	4,637	3,895	5,684	6,299	7,347	6,214	8,593	8,752	7,966	6,672	3,785	3,756	5,296	3,859	2,766	5,298	4,336	4,898	4,744	6,142			
PNA EEZs + AWs	27,338	29,156	32,765	33,267	36,853	36,007	37,303	40,872	40,324	50,372	55,904	50,530	52,167	49,113	34,670	39,338	42,276	38,639	35,774	38,136	38,856	38,558	36,006	40,270			
Total EEZ - excl PNA AWs and ID/PH	27,872	31,193	31,946	33,139	34,635	34,253	34,020	36,617	34,959	46,351	48,864	43,815	45,819	44,168	33,638	37,062	39,259	36,932	34,459	34,267	35,688	34,320	32,164	35,004			
Total EEZ + PNA AWs	31,447	34,627	37,051	37,948	40,966	39,963	41,215	44,537	43,466	53,399	58,285	54,024	56,139	52,424	38,545	42,879	47,121	41,497	38,442	40,872	41,302	40,382	38,335	42,817			
Total: EEZ + IWs + PNA AWs	38,295	42,183	44,968	47,782	49,303	46,278	48,802	52,642	52,960	54,840	59,763	56,383	62,243	58,082	46,717	49,792	53,694	48,824	46,847	48,620	47,848	45,545	45,396	48,072			
Total - minus ID/PH	37,142	40,972	43,403	46,031	47,609	44,463	47,291	51,021	51,800	54,006	58,935	54,926	59,889	56,498	45,595	47,731	51,128	48,118	45,630	47,313	46,570	44,381	43,969	46,401			
VIETNAM	0	0	0	0	0	0	0	0	0	0	0	0	0	0	0	0	0	0	0	0	0	0	0	0		14	

NOTES

1. Source: Raised logsheet data from ACE by EEZ. These value may vary year to year based on data corrections (e.g., to fishing activity positions), provision of additional logbook data, and adjustments to annual catch estimates.
2. CMM 2014-01, CMM 2015-01, CMM 2016-01 – Para. 23. for years 2015-2017; CMM 2017-01, CMM 2018-01, CMM 2020-01 for years 2018 – 2021, CMM 2021-01 for years 2022 and 2023, CMM 2023-01 for year 2024.
3. Catches and effort of vessels operating under charters and similar arrangements have been attributed to host island states or territories in accordance with paragraph 2 of CMM 2008-01 (paragraph 5 of CMM 2012-01, paragraph 5 of CMM 2013-01, paragraph 5 of CMM 2014-01, paragraph 5 of CMM 2015-01, paragraph 7 of CMM 2016-01) using the best information available to SPC-OFP. However, in some cases, catches have not yet been attributed to the CCM responsible for the “charter or similar arrangements” since the flag state CCM has yet to advise that it has excluded these catches from their data (and thereby avoid double-counting).
4. Purse-seine days for Indonesia and the Philippines in domestic waters have been estimated according to Appendix A in the SC4 Statistics SWG Working paper WP-4 (Data relating to purse seine effort on the high seas and in the zones of non-PNA member CCMs). The estimates exclude archipelagic waters (AW) effort.
5. The definition of days effort in this table may differ from the definition of days used in the PNA Vessel Day Scheme (VDS)
6. The Total International waters effort prior to 2013 does not includes estimates of effort for the Philippines domestic fleet at this stage.
7. Since 2011, some components of the tropical purse seine fleet have changed criteria for reporting days with searching (included as a fishing day) and transiting (not included as a fishing day) and this is reflected in the decline in fishing days since 2011.
8. Philippines effort in the high seas pocket 1 during 2013 was 1,352 sets with an estimated 1 set per three days to produce an estimate of 4,056 days effort.
9. Coastal States within the Convention Area either north of 20N or south of 20S. CMM 2014-01/CMM 2015-01 references: Para. 22 and footnote 6 on Page 7 – relevant for 2014 onwards.
10. Operational data for Japan EEZ are not available. Japan effort in their EEZ for years 2001-2007 was determined as the best estimate from their aggregate data. Japan effort for since 2008 in their EEZ has been provided by Japan in their submission of Annual effort by EEZ/high seas areas.
11. International waters covers high seas in the WCPFC Conventional Area covering the area 20N-20S (valid for CMM 2014-01, CMM 2015-01, CMM 2017-01, CMM 2018-01, CMM 2020-01, CMM 2021-01, and CMM 2023-01).
12. CMM 2014-01 or its replacement CMM – Para. 20. for 2014 -2018 “Coastal States within the Convention Area that are Parties to the Nauru Agreement (PNA) shall restrict the level of purse seine effort in their EEZs to 2010 levels through the PNA Vessel Days Scheme”.
13. CMM 2018-01, CMM 2020-01, CMM 2021-01, and CMM 2023-01 Attachment 1 includes a comment that PNA + Tokelau effort limits are to be managed cooperatively through the PNA Vessel Day Scheme.
14. The Vietnam purse seine fleet are understood to fish outside the WCPFC Convention Area (South China Sea).
15. CMM 2018-01, CMM 2020-01, CMM 2021-01, and CMM 2023-01 Table 1 provide the EEZ purse seine effort limits (CMM 2018-01 or its replacement measure paragraph 25)
16. ESTIMATED EEZ LIMIT –2015: Scientific estimates of catches and effort in Indonesia EEZ were recently revised to reflect distribution of catches between AW vs EEZ. Indonesia is yet to nominate a limit for purse seine effort in their EEZ in accordance with para 23 of CMM 2015-01. SPC advice as at 20 July 2014 (Table 1)
– average of estimated EEZ fishing days effort in 2001-2004 is 507 days. CMM 2021-01 Table 1 says Indonesia’s limit is 70,820 mt.

17. ESTIMATED EEZ LIMIT –2015: Scientific estimates of catches and effort in Philippines EEZ were recently revised to reflect distribution of catches between AW vs EEZ. SPC advice as at 20 July 2014 (Table 1) – average of estimated EEZ fishing days effort in 2001-2004 is 925 days. CMM 2018-01, CMM 2020-01, CMM 2021-01 and CMM 2023-01 Table 1 says Philippines's limit is yet to be notified to the Commission. In December 2019, the Philippines advised its EEZ limit was set at 42,000 fishing vessel days in lieu of the original submission, based on the current capacities and conditions of the small purse seine fishing vessels operating in the Philippines Pacific seaboard EEZ. These include wooden hulled ring net/purse seine fishing vessels (WCPFC16-2019-DP25).
18. CMM 2018-01, CMM 2020-01, CMM 2021-01 and CMM 2023-01 Attachment 1 Table 1 indicates that the limit is yet to be notified to the Commission (Republic of Korea, Philippines, Wallis and Futuna). In regard to CMM 2023-01, French Polynesia and Republic of Korea have notified the Secretariat in response to footnote 2 that they do not have established purse seine fisheries taking skipjack, yellowfin or bigeye tuna in their EEZs, so the provisions of this paragraph do not apply.
19. Japan explicitly reports days in it's EEZ as part of the annual data submission.

Table 2: Purse seine days fished in international waters in the WCPFC-CA between 20N and 20S, by flag, based on available operational data.

Flag	2001	2002	2003	2004	2005	2006	2007	2008	2009	2010	2011	2012	2013	2014	2015	2016	2017	2018	2019	2020	2021	2022	2023	2024	CMM limits for 2023	CMM limits for 2024	Notes
PURSE SEINE DAYS FISHED IN INTERNATIONAL WATERS 20N-20S																											
CHINA	88	122	146	424	498	225	333	253	872	14	7	25	14	8	21	23	20	26	26	24	25	22	14	19	26	26	11
COOK ISLANDS	0	0	0	0	0	0	0	0	0	0	0	0	0	0	0	0	0	0	72	27	185	226	117	316			
ECUADOR	0	0	0	0	0	0	25	9	14	2	0	13	1	1	0	0	0	0	0	0	0	0	0	0	**	**	7,9
EL SALVADOR	4	31	0	0	0	0	202	202	76	43	31	31	25	51	43	26	12	28	9	30	27	27	20	1	**	**	7,9
EUROPEAN UNION	0	12	14	56	32	85	232	309	240	319	271	380	365	377	248	87	183	160	147	193	226	210	215	210	403	403	7
FSM	241	241	172	380	207	83	156	127	331	7	3	10	6	9	471	381	597	625	1,019	784	953	412	741	465			
INDONESIA	500	500	500	500	500	500	500	500	500	0	0	0	0	0	0	0	0	0	0	0	0	0	0	0	0	0	0
JAPAN	1,351	1,256	1,747	1,851	1,756	1,472	1,340	1,066	1,589	6	3	1	14	8	102	22	0	7	33	41	39	38	23	27	121	121	
KIRIBATI	41	56	40	39	50	50	23	41	172	96	244	179	185	851	630	916	676	786	926	586	1,154	652	1,798	393			11
MARSHALL ISLANDS	171	208	439	397	402	154	168	284	168	69	30	1	5	6	836	393	630	306	955	683	385	180	478	115			
NAURU	0	0	0	0	0	0	0	0	0	0	0	0	0	0	0	0	0	106	184	420	107	152	636	328			
NEW ZEALAND	23	219	326	144	94	285	179	192	191	49	26	80	8	43	139	155	122	116	136	46	0	0	0	0	160	160	10
PAPUA NEW GUINEA	396	599	654	1,202	1,299	452	852	699	808	78	22	38	16	34	1,069	98	23	2	0	0	0	0	0	0			
PHILIPPINES	30	79	482	473	350	166	33	98	29	2	0	209	4,096	2,665	2,435	2,639	2,708	2,757	2,654	2,641	2,539	2,562	1,962	2,564	4,659	4,659	4,5
REPUBLIC OF KOREA	1,260	1,271	1,123	1,213	1,042	697	1,336	1,469	1,664	201	49	18	22	190	153	192	185	186	172	147	88	34	177	54	207	207	
SOLOMON ISLANDS	31	37	0	0	17	15	5	0	0	0	0	1	0	0	0	26	70	102	92	11	0	0	25	23			
TUVALU	0	0	0	0	0	0	0	0	37	4	4	1	0	1	87	147	83	61	73	132	273	55	329	52			
CHINESE TAIPEI	1,963	1,846	1,460	1,840	1,215	1,223	1,470	1,311	1,411	76	83	19	72	42	90	92	105	61	85	50	64	54	84	56	95	95	7,12
USA	998	1,328	883	1,009	830	560	778	1,517	1,703	395	566	1,233	1,035	1,128	1,841	1,438	840	1,575	1,545	1,675	692	597	798	71	1,270	1,270	7, 13
VANUATU	66	165	186	570	374	397	377	221	102	37	31	6	6	2	0	162	195	105	143	136	138	109	315	27			
TOTAL	7,163	7,970	8,172	10,098	8,666	6,364	8,009	8,298	9,907	1,398	1,370	2,245	5,870	5,416	8,165	6,797	6,449	7,009	8,271	7,626	6,895	5,330	7,732	4,721			
PURSE SEINE DAYS FISHED IN WCPFC-IATTC OVERLAP AREA																											
ECUADOR	0	0	0	0	0	0	43	169	74	52	40	86	105	71	96	5	108	253	117	91	102	110	59	47			7
EL SALVADOR	21	33	3	0	0	0	30	133	30	21	25	5	128	155	56	69	37	26	22	21	24	16	40	0			7
EUROPEAN UNION	126	74	90	50	40	112	38	74	37	24	65	52	35	18	70	41	14	42	14	28	44	62	97	151			7
USA	0	0	0	0	0	0	0	0	0	0	0	0	0	0	0	0	0	0	0	0	77	14	178	44			7
TOTAL	147	107	93	50	40	112	111	376	141	97	130	143	268	244	222	115	159	321	153	140	247	202	374	242			

Notes:

1. Source: Raised logsheet data, unless otherwise specified in the subsequent notes.
2. Catches and effort of vessels operating under charters and similar arrangements have been attributed to host island states or territories in accordance with paragraph 2 of CMM 2008-01 (paragraph 5 of CMM 2012-01, paragraph 5 of CMM 2013-01, paragraph 5 of CMM 2014-01, paragraph 5 of CMM 2015-01, paragraph 7 of CMM 2016-01) using the best information available to SPC-OFP. However, in several cases, catches have not yet been attributed to the CCM responsible for the “charter or similar arrangements” since the flag state CCM has yet to advise that it has excluded these catches from their data (and thereby avoid double-counting). Under CMM 2017-01 paragraph 8 (and replacement CMMs) Charter provisions are not applicable to high seas purse seine effort attribution.
3. Purse-seine days for Indonesia have been arbitrarily assigned 500 days for high seas according to Appendix A in the SC4 Statistics SWG Working paper WP-4 (Data relating to purse-seine effort on the high seas and in the zones of non-PNA member CCMs)
4. The measures that the Philippines will take are in Attachment C of CMM 2014-01 (or its replacement CMM) for years from 2014 onwards. Attachment C para 10 describes two limits: 1) total number of catcher vessels fishing in HSP-SMA is limited to 36, and 2) an effort limit in vessel days of 4,659 days (ref Table 2(b) WCPFC9 -2012-IP09_rev3)
5. The Total International waters effort prior to 2012 does not include estimates of effort for the Philippines domestic fleet at this stage. Philippines effort in the high seas pocket 1 (HSP#1) during 2012 was 209 days for the period Oct-Dec based on observer data. Philippines effort in the high seas pocket 1 (HSP#1) during 2013 was 1,352 sets with an estimated 1 set per three days to produce an estimate of 4,056 days effort. Philippines effort in the high seas pocket 1 during 2014 was listed as 2,667 days according to the Philippines Annual Report Part 1 produced for SC11. Estimates for HSP#1 since 2015 have been based on observer data with 100% coverage. Estimates include the Philippines ringnet fleet.
6. Since 2011, some components of the tropical purse seine fleet have changed criteria for reporting days with searching (included as a fishing day) and transiting (not included as a fishing day) and this is reflected in the decline in fishing days since 2011.
7. The days presented in Table 2 exclude effort in the overlap area because it takes into account the WCPFC9 decision on the application of measures in the part of the WCPF Convention Area that overlaps with the IATTC Convention Area (WCPFC9 Summary Report paragraph 80). European Union is a WCPFC member who is also an IATTC member, notified WCPFC in April 2013, of their choice of IATTC measures in the overlap area. Given that Ecuador and El Salvador are members of IATTC, the rules of the RFMO of which it is a member apply in the overlap area between WCPFC and IATTC, even if the CCM is a cooperating non-member of the other RFMO. The USA notified WCPFC in November 2021 of their choice of IATTC measures in the overlap area. Total days in Table 2 do not therefore reconcile with total high seas days in Table 1.
8. ‘CMM limits’ are taken from CMM 2023-01 Table 2 and CMM 2021-01 Table 2
9. Subject to CNM on participatory rights, in accordance with paragraph 6 of CMM 2014-01 (or its replacement CMM) for years from 2015 onwards
10. The basis of the CMM 2014-01 (or its replacement CMM) high seas days limit for New Zealand was the average of 2006-2008 effort with an agreed reduction in line with CMM 2013-01 and its predecessor CMMs.
11. For China and Kiribati, the 2015–2016 effort estimates reflect their WCPFC charter notifications for these years. For WCPFC charter notifications, the 2017–2023 high seas effort estimates have been attributed to the flag state for these years, based on the best information available.
12. CMM 2017-01 Att 1 Table 2 specifies a limit of 95 days for Chinese Taipei. However Chinese Taipei has advised they will apply a limit of 80 days in 2018, to take into account the amount the limit was exceeded in 2017.

CMM 2018-01 Att 1 Table 2 specifies a limit of 95 days for Chinese Taipei for 2019.

13. A high seas purse seine effort limit may be adjusted in accordance with para 30 of CMM 2017 -01, CMM 2018-01, CMM 2020-01, CMM 2021-01, CMM 2023-01.
14. The number of high seas days represented here may be less than the sum of calendar days in the high seas, because in the raised data, the estimate of days may be fractional (i.e., less than 1) if a vessel conducted fishing activities (fishing or searching) in multiple EEZs or high seas areas in a single calendar day. This ensures that for scientific analyses, effort is not overestimated.
15. The US has notified the Secretariat that the effort of vessels offloading more than 50% of their catch in a given year, will be attributed to the respective territories, including American Samoa (as required by local regulations), Guam, and the Northern Mariana Islands, and not the United States. The list of applicable vessels will be provided to the Secretariat annually, beginning in 2025 (2024 fishing year).

Table 3: Summary of notifications received from the United States from 2024 to date, in relation to CMM 2023-01 paragraph 25 (purse seine days fished in international waters in the WCPFC-CA between 20N and 20S, by CCM).

CCM	2024	CMM limits for 2023	CMM limits for 2024	Notes
PURSE SEINE DAYS FISHED IN INTERNATIONAL WATERS 20N-20S				
AMERICAN SAMOA	360			15
GUAM	0			15
NORTHERN MARIANA IS.	0			15
TOTAL	360			
PURSE SEINE DAYS FISHED IN WCPFC-IATTC OVERLAP AREA				
AMERICAN SAMOA	232			15
GUAM	0			15
NORTHERN MARIANA IS.	0			15
TOTAL	232			

Table 4: Estimated FAD sets undertaken in the tropical purse seine fishery, by flag, 2000-2024

CCM	2000	2001	2002	2003	2004	2005	2006	2007	2008	2009	2010	2011	2012	2013	2014	2015	2016	2017	2018	2019	2020	2021	2022	2023	2024
CHINA	0		115	103	281	600	472	602	544	1,261	537	1,169	907	1,168	1,183	289	33	143	204	16	0	0	144	195	11
COOK ISLANDS	0	0	0	0	0	0	0	0	0	0	0	0	0	0	0	0	0	0	0	43	14	63	59	20	126
ECUADOR	0	0	0	0	0	0	0	55	192	189	248	441	414	283	354	157	52	246	263	226	239	240	251	169	124
EL SALVADOR	0	9	22	1	0	0	0	49	132	137	135	185	213	307	123	177	89	55	86	49	65	92	78	105	23
EUROPEAN UNION	112	19	31	52	76	43	119	228	259	315	373	487	448	515	428	323	90	145	184	160	209	288	292	265	400
FEDERATED STATES OF MICRONESIA	350	324	372	498	789	497	282	326	484	732	403	682	772	529	570	573	1,091	1,249	1,355	1,296	1,960	1,785	2,050	1,558	1,463
INDONESIA	0	0	0	0	0	0	0	0	0	0	16	0	0	0	0	0	0	0	0	0	0	0	0	0	0
JAPAN	2,928	2,319	2,022	2,267	3,161	2,378	2,617	2,437	2,603	2,403	833	1,320	1,619	1,038	1,027	663	887	635	559	303	621	902	788	454	535
KIRIBATI	56	70	59	62	95	93	66	61	68	285	218	410	470	573	863	1,481	1,637	2,534	2,966	3,026	2,644	3,240	3,482	4,406	2,682
MARSHALL ISLANDS	60	391	566	858	1,063	934	741	853	469	594	630	1,282	1,386	1,112	1,390	1,027	670	1,242	1,217	1,108	1,029	1,538	1,640	1,224	984
NAURU	0	0	0	0	0	0	0	0	0	0	0	0	0	0	0	0	0	0	89	256	1,089	1,511	1,680	1,357	764
NEW ZEALAND	61	105	278	425	409	193	489	373	440	372	187	193	156	131	155	27	12	75	40	36	2	0	0	0	0
PAPUA NEW GUINEA	431	515	1,134	1,018	2,181	1,830	1,831	1,380	1,200	1,472	793	1,200	1,395	1,228	1,291	1,027	1,211	1,516	1,416	980	373	523	288	322	296
PHILIPPINES	1,032	1,226	1,125	662	1,288	625	706	204	555	545	526	500	893	814	603	420	421	150	159	1,149	467	0	0	0	112
REPUBLIC OF KOREA	732	527	1,147	596	2,276	872	2,245	1,854	1,920	2,133	1,043	2,193	1,349	1,126	1,010	1,489	1,532	1,851	2,317	1,773	1,434	1,566	1,374	1,020	1,035
SOLOMON ISLANDS	73	113	112	75	81	53	204	116	85	136	91	150	171	133	81	97	162	340	409	346	123	108	347	468	389
CHINESE TAIPEI	1,740	1,591	2,631	1,835	3,162	2,671	2,863	2,584	2,168	2,439	1,404	2,514	2,064	2,198	2,318	1,604	1,366	1,824	2,225	1,966	1,869	2,119	2,420	1,574	1,404
TUVALU	0	0	0	0	0	0	0	0	0	20	36	55	85	74	48	36	59	59	105	68	119	359	473	412	259
UNITED STATES OF AMERICA	2,607	2,059	1,764	1,551	2,078	1,302	1,598	1,351	2,544	3,567	2,336	3,287	3,372	3,182	3,493	2,125	2,060	2,507	2,909	1,893	1,750	1,196	868	1,023	807
VANUATU	418	36	156	248	935	675	697	809	405	502	215	377	374	285	230	114	37	121	99	136	331	450	553	362	121
TOTAL	10,600		11,534	10,251	17,875	12,766	14,930	13,282	14,068	17,102	10,024	16,445	16,088	14,696	15,167	11,629	11,409	14,692	16,602	14,830	14,338	15,980	16,787	14,934	11,535

Notes:

1. Source: Raised logsheet data.
2. Covers Drifting FAD, Log and Anchored FAD sets in the tropical purse seine fishery of the WCPFC Convention Area (20°N-20°S), by flag
3. Excludes archipelagic waters. Fleets from Indonesia, Kiribati, Papua New Guinea, Philippines (DW), Philippines (domestic) and Solomon Islands in this list are normally the only fleets active in archipelagic waters.
4. Includes high seas
5. Excludes Vietnam domestic fleet
6. Complete information from Indonesia and Philippines domestic fisheries are not available.
7. CMM 2015-01 – Paras. 14 and 17, and ATTACHMENT A, provides information on the 2016 FAD set limits that applies to FSM, Japan, Kiribati, Korea and United States of America.
8. CMM 2016-01 – Paras. 14 and 17, and ATTACHMENT A, provides information on the 2017 FAD set limits that applies to Japan, Korea and United States of America.
9. CMM 2014-01 – Paras. 14 and 17, and ATTACHMENT A, provides information on the 2015 FAD set limits that applies to FSM, Japan, Kiribati and Korea.
10. CMM 2013-01, Para 16 (ii) annual limit of FAD sets for 2015 (as set out in Column 'A' of Attachment A of CMM 2014 - 01) applies to FSM, Japan, Kiribati and Korea
11. Annual FAD sets consider CMM 2014-01 (or its replacement CMM) footnote 3 notifications (vessels that are managed outside of FAD set limit). This exemption applied to certain Kiribati vessels for 2016-2017.
12. In 2016, FSM applied CMM 2014-01 footnote 3 notifications, but formally chose the 4th month FAD closure for 2017.
13. The estimates of FAD sets for Kiribati and China reflect their respective WCPFC charter notifications since 2016.
14. This table does not include FAD sets for the exemptions under CMM 2014-01 (see Notes 11, 12 and 13)
15. 'CMM 2016-01 – Adjusted Baseline', applies to Kiribati in 2017. The adjusted baseline includes average annual FAD sets for Kiribati vessels that were previously exempt prior to 2017 (due to being newly-introduced since 2012) that had operated for three years prior to 2017.
16. Annual FAD sets count does include CMM 2017-01 (footnote 2) and CMM 2018-01 16 (footnote 1), CMM 2020-01 16 (footnote 1) and CMM 2021-01 14 (footnote 1) CMM 2023-01 13 (footnote 1) FAD Sets of domestic purse seine vessels of PNA countries which are notified as being managed under the PNA 3IA while operating in that PNA CCMs national waters during the 3-month FAD closure period of July – September (2018-2023) or the 1 1/2 -month FAD Closure period of July to mid-August (2024 onwards) of a particular notified year.

Table 5: Tropical purse seine tuna catch and effort by set type and species in the WCPFC Convention Area

Table 5: Tropical purse seine tuna catch and effort by set type and species in the WCPFC Convention Area (continued)

UNASSOCIATED SCHOOLS													ASSOCIATED SCHOOLS										TOTAL				
VESSELS					SKJ		YFT		BET		TOTAL	SKJ		YFT		BET		TOTAL	SKJ		YFT	BET	TOTAL				
Fleet	Year	YB	LOG	DAYS	SETS	MT	%	MT	%	MT	%	MT	SETS	MT	%	MT	%	MT	%	MT	SETS	MT	MT	MT	TOTAL		
ES	2018	2	2	250	4	96	100	0	0	0	0	96	190	7,731	75	960	9	1,641	16	10,332	194	7,827	960	1,641	10,428		
ES	2019	2	2	203	0	0	0	0	0	0	0	0	160	7,892	79	1,162	12	880	9	9,934	160	7,892	1,162	880	9,934		
ES	2020	2	2	220	3	1	100	0	0	0	0	1	215	7,423	69	1,796	17	1,534	14	10,753	218	7,424	1,796	1,534	10,754		
ES	2021	3	3	275	9	341	61	218	39	1	0	560	290	8,330	65	1,846	14	2,610	20	12,786	299	8,671	2,064	2,611	13,346		
ES	2022	3	3	274	7	144	58	104	42	1	0	249	293	10,715	62	2,786	16	3,828	22	17,329	300	10,859	2,890	3,829	17,578		
ES	2023	4	4	294	64	943	55	754	44	3	0	1,700	268	16,060	80	1,879	9	2,015	10	19,954	332	17,003	2,633	2,018	21,654		
ES	2024	4	4	454	37	896	94	25	3	32	3	953	407	32,840	77	4,489	11	5,197	12	42,526	444	33,736	4,514	5,229	43,479		
FM	2010	7	7	1,265	612	8,505	80	2,119	20	61	1	10,685	419	10,899	76	2,360	16	1,078	8	14,337	1,031	19,404	4,479	1,139	25,022		
FM	2011	7	7	1,595	477	5,901	78	1,666	22	18	0	7,585	779	13,542	72	4,243	22	1,124	6	18,909	1,256	19,443	5,909	1,142	26,494		
FM	2012	9	9	1,507	459	6,519	78	1,747	21	108	1	8,374	818	21,457	78	4,383	16	1,754	6	27,594	1,277	27,976	6,130	1,862	35,968		
FM	2013	10	9	1,336	450	9,031	87	1,281	12	113	1	10,425	539	12,670	72	3,599	20	1,312	7	17,581	989	21,701	4,880	1,425	28,006		
FM	2014	10	9	1,350	605	13,037	85	2,016	13	316	2	15,369	608	16,495	73	4,365	19	1,845	8	22,705	1,213	29,532	6,381	2,161	38,074		
FM	2015	12	13	1,823	1,205	26,336	84	4,694	15	427	1	31,457	638	18,617	77	3,931	16	1,738	7	24,286	1,843	44,953	8,625	2,165	55,743		
(continued on next page...)																											
FM	2016	16	18	2,622	1,051	22,284	82	4,502	17	317	1	27,103	1,133	35,155	78	6,419	14	3,471	8	45,045	2,184	57,439	10,921	3,788	72,148		
FM	2017	19	20	3,413	1,912	34,128	78	9,245	21	300	1	43,673	1,370	31,642	75	7,286	17	3,005	7	41,933	3,282	65,770	16,531	3,305	85,606		
FM	2018	22	23	3,645	2,412	47,839	81	10,408	18	648	1	58,895	1,432	50,824	83	7,994	13	2,403	4	61,221	3,844	98,663	18,402	3,051	120,116		
FM	2019	23	25	4,300	3,718	83,683	82	17,325	17	1,514	1	102,522	1,337	44,321	78	9,016	16	3,223	6	56,560	5,055	128,004	26,341	4,737	159,082		
FM	2020	27	27	4,542	2,998	63,795	81	14,416	18	604	1	78,815	2,105	73,577	75	18,282	19	6,231	6	98,090	5,103	137,372	32,698	6,835	176,905		
FM	2021	28	29	4,094	2,729	51,448	77	14,611	22	460	1	66,519	1,789	63,784	77	13,123	16	5,855	7	82,762	4,518	115,232	27,734	6,315	149,281		
FM	2022	25	25	4,064	2,994	54,722	82	11,736	18	407	1	66,865	2,085	73,752	79	14,036	15	6,124	7	93,912	5,079	128,474	25,772	6,531	160,777		
FM	2023	27	27	4,103	3,582	57,368	71	22,687	28	276	0	80,331	1,567	57,084	86	6,967	10	2,439	4	66,490	5,149	114,452	29,654	2,715	146,821		
FM	2024	26	26	4,382	5,010	108,639	87	16,104	13	686	1	125,429	1,472	55,914	84	7,447	11	2,926	4	66,287	6,482	164,553	23,551	3,612	191,716		
JP	2010	37	35	5,556	5,633	135,171	81	31,137	19	1,538	1	167,846	833	25,590	70	8,299	23	2,445	7	36,334	6,466	160,761	39,436	3,983	204,180		
JP	2011	40	36	6,399	5,956	92,465	78	26,003	22	590	0	119,058	1,320	39,392	77	7,653	15	4,202	8	51,247	7,276	131,857	33,656	4,792	170,305		
JP	2012	41	39	5,375	4,867	103,368	84	18,106	15	1,507	1	122,981	1,619	58,840	80	10,058	14	4,524	6	73,422	6,486	162,208	28,164	6,031	196,403		
JP	2013	41	36	5,412	4,759	104,274	87	14,410	12	1,545	1	120,229	1,038	42,189	79	7,520	14	3,704	7	53,413	5,797	146,463	21,930	5,249	173,642		
JP	2014	40	34	4,800	4,275	88,990	76	25,853	22	2,133	2	116,976	1,027	38,016	79	6,630	14	3,342	7	47,988	5,302	127,006	32,483	5,475	164,964		
JP	2015	40	35	3,951	3,380	87,003	74	26,713	23	3,313	3	117,029	663	19,527	68	6,189	22	2,889	10	28,605	4,043	106,530	32,902	6,202	145,634		
JP	2016	37	31	4,881	4,170	82,521	75	25,232	23	1,832	2	109,585	887	24,613	69	7,656	22	3,280	9	35,549	5,057	107,134	32,888	5,112	145,134		
JP	2017	38	30	4,529	3,892	76,272	69	31,379	29	2,124	2	109,775	635	19,827	75	4,932	19	1,729	7	26,488	4,527	96,099	36,311	3,853	136,263		
JP	2018	34	29	3,885	3,706	95,693	75	27,922	22	3,505	3	127,120	559	20,956	73	5,804	20	1,785	6	28,545	4,265	116,649	33,726	5,290	155,665		
JP	2019	36	31	3,988	4,479	105,058	77	29,647	22	1,802	1	136,507	303	10,198	76	2,521	19	740	5	13,459	4,782	115,256	32,168	2,542	149,966		
JP	2020	37	32	3,188	4,203	82,394	77	23,018	22	932	1	106,344	621	18,072	68	6,000	23	2,523	9	26,595	4,824	100,466	29,018	3,455	132,939		
JP	2021	36	33	3,052	3,570	73,845	77	20,778	22	915	1	95,538	902	24,466	72	6,877	20	2,852	8	34,195	4,472	98,311	27,655	3,767	129,733		
JP	2022	38	31	3,049	3,963	79,666	81	18,115	18	818	1	98,599	788	25,765	76	5,645	17	2,489	7	33,899	4,751	105,431	23,760	3,307	132,498		
JP	2023	38	29	2,532	3,376	81,435	79	19,759	19	1,350	1	102,544	454	14,090	74	3,558	19	1,317	7	18,965	3,830	95,525	23,317	2,667	121,509		
JP	2024	12	29	2,250	2,927	86,736	84	15,784	15	333	0	102,853	535	26,164	80	5,088	16	1,304	4	32,556	3,462	112,900	20,872	1,637	135,409		
KI	2010	5	4	617	465	6,951	74	2,376	25	61	1	9,388	245	11,042	70	2,729	17	1,926	12	15,697	710	17,993	5,105	1,987	25,085		
KI	2011	7	6	1,295	784	9,566	72	3,618	27	28	0	13,212	553	24,303	73	4,438	13	4,469	13	33,210	1,337	33,869	8,056	4,497	46,422		
KI	2012	9	9	1,733	1,586	30,306	79	7,652	20	165	0	38,123	489	19,615	81	2,997	12	1,470	6	24,082	2,075	49,921	10,649	1,635	62,205		
KI	2013	12	11	1,877	1,436	27,772	84	5,235	16	221	1	33,228	665	30,349	78	5,764	15	2,900	7	39,013	2,101	58,121	10,999	3,121	72,241		
KI	2014	14	21	2,729	2,177	42,496	72	16,199	27	336	1	59,031	825	40,509	81	5,263	10	4,371	9	50,143	3,002	83,005	21,462	4,707	109,174		
KI	2015	21	25	2,822	2,463	60,672	85	9,818	14	532	1	71,022	1,073	57,249	87	6,074	9	2,353	4	65,676	3,536	117,921	15,892	2,885	136,698		

Table 5: Tropical purse seine tuna catch and effort by set type and species in the WCPFC Convention Area *(continued)*

UNASSOCIATED SCHOOLS																									ASSOCIATED SCHOOLS																TOTAL							
VESSELS					SKJ								YFT								BET								TOTAL				SKJ				YFT				BET				TOTAL			
Fleet	Year	YB	LOG	DAYS	SETS	MT	%	MT	%	MT	%	MT	SETS	MT	%	MT	%	MT	%	MT	SETS	MT	MT	MT	TOTAL																							
KI	2016	27	23	4,433	2,420	50,762	80	11,961	19	636	1	63,359	1,865	81,274	80	12,084	12	8,265	8	101,623	4,285	132,036	24,045	8,901	164,982																							
KI	2017	19	22	4,606	1,807	29,524	73	10,885	27	253	1	40,662	2,542	93,513	83	12,875	11	6,554	6	112,942	4,349	123,037	23,760	6,807	153,604																							
KI	2018	21	22	4,391	1,538	34,188	81	7,970	19	308	1	42,466	2,985	119,856	82	16,820	11	10,139	7	146,815	4,523	154,044	24,790	10,447	189,281																							
KI	2019	22	25	5,108	2,625	61,467	89	7,222	10	266	0	68,955	3,036	134,419	84	19,259	12	6,116	4	159,794	5,661	195,886	26,481	6,382	228,749																							
KI	2020	25	24	4,543	1,486	37,815	87	5,491	13	383	1	43,689	2,786	122,587	78	24,017	15	10,083	6	156,687	4,272	160,402	29,508	10,466	200,376																							
KI	2021	26	27	5,287	1,628	35,647	79	9,486	21	254	1	45,387	3,243	112,902	80	18,209	13	9,473	7	140,584	4,871	148,549	27,695	9,727	185,971																							
KI	2022	24	30	5,286	1,322	29,860	84	5,474	15	154	0	35,488	3,484	132,011	85	14,554	9	9,003	6	155,568	4,806	161,871	20,028	9,157	191,056																							
KI	2023	30	32	6,423	1,612	25,647	62	15,669	38	275	1	41,591	4,425	167,852	85	18,820	10	9,734	5	196,406	6,037	193,499	34,489	10,009	237,997																							
KI	2024	25	33	6,516	5,250	112,152	91	11,367	9	384	0	123,903	2,683	112,826	85	15,045	11	5,456	4	133,327	7,933	224,978	26,412	5,840	257,230																							
KR	2010	29	29	7,003	6,281	143,694	70	58,885	29	2,287	1	204,866	1,110	55,158	76	11,006	15	6,203	9	72,367	7,391	198,852	69,891	8,490	277,233																							
KR	2011	28	29	6,453	4,487	79,374	73	29,288	27	818	1	109,480	2,127	74,520	76	16,649	17	6,947	7	98,116	6,614	153,894	45,937	7,765	207,596																							
KR	2012	28	28	5,723	6,069	137,114	74	47,331	25	1,313	1	185,758	1,428	63,799	83	9,926	13	2,707	4	76,432	7,497	200,913	57,257	4,020	262,190																							
KR	2013	27	29	5,867	6,049	131,244	81	29,710	18	2,072	1	163,026	1,166	47,913	77	10,672	17	4,021	6	62,606	7,215	179,157	40,382	6,093	225,632																							
KR	2014	28	28	5,357	5,807	155,978	78	43,143	22	1,084	1	200,205	1,095	59,602	85	6,813	10	3,429	5	69,844	6,902	215,580	49,956	4,513	270,049																							
KR	2015	25	25	4,602	4,545	126,240	80	29,148	19	1,701	1	157,089	1,529	97,995	88	9,346	8	3,817	3	111,158	6,074	224,235	38,494	5,518	268,247																							
KR	2016	25	25	4,702	4,245	132,262	78	35,383	21	1,599	1	169,244	1,586	93,923	86	9,619	9	5,667	5	109,209	5,831	226,185	45,002	7,266	278,453																							
KR	2017	26	26	5,443	4,877	99,882	69	44,097	30	890	1	144,869	1,872	85,306	84	11,464	11	5,183	5	101,953	6,749	185,188	55,561	6,073	246,822																							
KR	2018	27	27	5,568	4,369	104,996	78	27,412	20	1,533	1	133,941	2,388	115,561	86	10,691	8	7,356	6	133,608	6,757	220,557	38,103	8,889	267,549																							
KR	2019	26	26	5,604	5,782	177,578	86	27,982	14	988	0	206,548	1,805	96,501	89	8,135	8	3,634	3	108,270	7,587	274,079	36,117	4,622	314,818																							
KR	2020	27	27	5,385	5,266	130,134	79	32,720	20	847	1	163,701	1,512	71,044	82	10,267	12	5,530	6	86,841	6,778	201,178	42,987	6,377	250,542																							
KR	2021	23	23	4,842	4,582	108,500	75	36,124	25	834	1	145,458	1,698	68,405	81	10,588	13	5,000	6	83,993	6,280	176,905	46,712	5,834	229,451																							
KR	2022	22	21	4,720	4,712	111,723	78	30,223	21	919	1	142,865	1,521	68,777	84	8,804	11	4,036	5	81,617	6,233	180,500	39,027	4,955	224,482																							
KR	2023	22	22	4,853	5,213	121,186	71	48,609	28	997	1	170,792	1,082	56,785	83	7,538	11	4,303	6	68,626	6,295	177,971	56,147	5,300	239,418																							
KR	2024	22	22	4,874	6,481	173,153	82	36,339	17	991	0	210,483	1,037	57,578	88	5,514	8	2,449	4	65,541	7,518	230,731	41,853	3,440	276,024																							
MH	2010	10	10	1,596	1,228	18,227	73	6,116	24	646	3	24,989	636	25,489	75	5,262	16	3,033	9	33,784	1,864	43,716	11,378	3,679	58,773																							

Table 5: Tropical purse seine tuna catch and effort by set type and species in the WCPFC Convention Area (*continued*)

MH	2011	10	10	2,462	546	7,982	84	1,499	16	68	1	9,549	1,548	59,529	74	11,204	14	9,902	12	80,635	2,094	67,511	12,703	9,970	90,184
MH	2012	10	10	1,974	748	12,163	74	4,254	26	87	1	16,504	1,394	46,100	80	7,155	12	4,609	8	57,864	2,142	58,263	11,409	4,696	74,368
MH	2013	10	12	2,082	1,066	17,937	90	1,961	10	46	0	19,944	1,157	42,870	74	9,732	17	5,027	9	57,629	2,223	60,807	11,693	5,073	77,573
MH	2014	VESSELS		12	1,125	18,880	88	2,559	12	113	1	21,552	1,216	43,430	80	7,131	13	3,785	7	54,346	2,341	62,310	9,690	3,898	75,898
MH	2015	12	12	2,117	1,843	36,039	95	1,760	5	32	0	37,831	1,053	41,793	85	5,083	10	2,127	4	49,003	2,896	77,832	6,843	2,159	86,834
MH	2016	10	11	1,923	1,305	23,007	82	5,050	18	115	0	28,172	671	26,717	81	4,382	13	2,021	6	33,120	1,976	49,724	9,432	2,136	61,292
MH	2017	10	10	2,101	533	7,000	72	2,679	27	78	1	9,757	1,311	41,833	76	8,889	16	4,307	8	55,029	1,844	48,833	11,568	4,385	64,786
MH	2018	13	13	1,916	784	12,347	87	1,900	13	15	0	14,262	1,222	48,251	82	7,670	13	3,188	5	59,109	2,006	60,598	9,570	3,203	73,371
MH	2019	11	11	2,415	1,700	32,434	79	8,715	21	138	0	41,287	1,108	44,796	82	7,428	14	2,302	4	54,526	2,808	77,230	16,143	2,440	95,813
MH	2020	11	11	1,824	1,066	20,615	90	2,161	9	77	0	22,853	1,049	48,426	80	8,991	15	3,420	6	60,837	2,115	69,041	11,152	3,497	83,690
MH	2021	11	11	2,097	655	10,494	78	2,947	22	64	0	13,505	1,567	63,691	82	8,970	12	4,861	6	77,522	2,222	74,185	11,917	4,925	91,027
MH	2022	11	11	1,993	618	10,570	87	1,523	13	40	0	12,133	1,640	61,868	84	7,543	10	4,460	6	73,871	2,258	72,438	9,066	4,500	86,004
MH	2023	11	11	1,991	1,077	14,536	74	5,088	26	20	0	19,644	1,232	40,551	84	5,154	11	2,617	5	48,322	2,309	55,087	10,242	2,637	67,966
MH	2024	11	11	2,127	2,130	37,818	92	3,353	8	81	0	41,252	986	39,729	81	6,506	13	2,645	5	48,880	3,116	77,547	9,859	2,726	90,132
NR	2018	2	2	166	123	1,413	45	1,709	55	1	0	3,123	90	5,260	91	363	6	135	2	5,758	213	6,673	2,072	136	8,881
NR	2019	9	10	720	703	19,714	93	1,435	7	89	0	21,238	258	10,257	87	1,296	11	291	2	11,844	961	29,971	2,731	380	33,082
NR	2020	12	14	2,260	1,835	35,801	83	7,105	17	139	0	43,045	1,101	38,693	73	10,719	20	3,412	6	52,824	2,936	74,494	17,824	3,551	95,869
NR	2021	15	19	2,771	1,858	31,857	72	11,981	27	274	1	44,112	1,586	55,356	73	15,075	20	5,550	7	75,981	3,444	87,213	27,056	5,824	120,093
NR	2022	12	16	2,460	1,499	24,798	80	6,091	20	138	0	31,027	1,684	60,938	80	10,892	14	4,473	6	76,303	3,183	85,736	16,983	4,611	107,330
NR	2023	15	15	2,312	1,483	20,857	70	8,688	29	99	0	29,644	1,363	48,129	82	7,400	13	3,040	5	58,569	2,846	68,986	16,088	3,139	88,213
NR	2024	13	14	1,824	2,171	43,518	93	3,379	7	120	0	47,017	765	32,421	83	5,191	13	1,683	4	39,295	2,936	75,939	8,570	1,803	86,312
NZ	2010	9	4	626	425	16,627	99	198	1	54	0	16,879	191	7,108	76	1,821	19	480	5	9,409	616	23,735	2,019	534	26,288
NZ	2011	9	4	416	174	13,590	95	729	5	43	0	14,362	197	5,652	73	1,705	22	334	4	7,691	371	19,242	2,434	377	22,053
NZ	2012	9	4	461	288	14,680	94	891	6	109	1	15,680	165	3,594	77	791	17	300	6	4,685	453	18,274	1,682	409	20,365
NZ	2013	9	4	447	270	18,266	97	455	2	28	0	18,749	134	4,437	74	1,156	19	395	7	5,988	404	22,703	1,611	423	24,737
NZ	2014	9	4	511	304	14,211	93	955	6	168	1	15,334	161	4,287	77	768	14	513	9	5,568	465	18,498	1,723	681	20,902
NZ	2015	8	2	249	315	15,922	98	263	2	92	1	16,277	43	1,862	82	319	14	92	4	2,273	358	17,784	582	184	18,550
NZ	2016	6	2	210	264	9,527	98	117	1	48	0	9,692	21	1,242	79	285	18	45	3	1,572	285	10,769	402	93	11,264
NZ	2017	6	1	122	23	5,013	97	134	3	1	0	5,148	75	2,799	85	376	11	126	4	3,301	98	7,812	510	127	8,449
NZ	2018	5	1	113	61	4,075	81	967	19	2	0	5,044	41	1,549	87	111	6	112	6	1,772	102	5,624	1,078	114	6,816
NZ	2019	5	1	129	91	7,872	98	136	2	21	0	8,029	38	1,425	76	297	16	157	8	1,879	129	9,297	433	178	9,908
NZ	2020	4	1	27	23	4,755	99	50	1	7	0	4,812	2	99	83	13	11	7	6	119	25	4,854	63	14	4,931
PG	2010	45	46	8,642	5,455	91,094	74	31,647	26	871	1	123,612	2,612	56,198	69	20,277	25	4,913	6	81,388	8,067	147,292	51,924	5,784	205,000
PG	2011	49	47	9,146	5,018	70,368	75	22,251	24	676	1	93,295	3,145	57,946	70	21,016	25	4,046	5	83,008	8,163	128,314	43,267	4,722	176,303
PG	2012	51	51	9,387	6,530	95,972	67	45,271	32	1,538	1	142,781	2,981	63,319	68	23,825	26	5,505	6	92,649	9,511	159,291	69,096	7,043	235,430
PG	2013	51	51	9,394	6,862	96,872	68	43,624	31	1,816	1	142,312	2,453	50,688	65	22,494	29	4,224	5	77,406	9,315	147,560	66,118	6,040	219,718
PG	2014	55	50	9,179	6,425	105,891	74	35,924	25	1,882	1	143,697	2,302	67,708	75	17,690	20	5,220	6	90,618	8,727	173,599	53,614	7,102	234,315
PG	2015	53	54	6,554	5,646	103,787	72	39,787	27	1,571	1	145,145	1,590	50,329	73	14,391	21	4,621	7	69,341	7,236	154,116	54,178	6,192	214,486
PG	2016	67	49	8,821	7,587	126,875	64	66,306	34	3,670	2	196,851	2,208	76,858	74	19,819	19	6,510	6	103,187	9,795	203,733	86,125	10,180	300,038
PG	2017	67	59	10,743	10,274	128,028	56	96,206	42	3,874	2	228,108	2,134	51,957	69	18,694	25	4,366	6	75,017	12,408	179,985	114,900	8,240	303,125
PG	2018	56	61	9,587	10,309	154,397	66	75,241	32	4,071	2	233,709	1,969	57,359	74	16,548	21	3,116	4	77,023	12,278	211,756	91,789	7,187	310,732
PG	2019	50	54	6,449	7,417	144,325	71	57,116	28	2,287	1	203,728	1,183	48,553	82	9,157	15	1,495	3	59,205	8,600	192,878	66,273	3,782	262,933
PG	2020	37	44	6,383	7,253	95,354	54	78,917	45	1,764	1	176,035	600	16,920	67	7,237	29	1,020	4	25,177	7,853	112,274	86,154	2,784	201,212
PG	2021	37	42	6,302	6,198	93,612	61	56,886	37	2,004	1	152,502	887	16,397	56	11,273	38	1,772	6	29,442	7,085	110,009	68,159	3,776	181,944
PG	2022	37	45	6,139	7,994	114,422	65	60,915	35	1,095	1	176,432	612	13,637	60	8,327	37	847	4	22,811	8,606	128,059	69,242	1,942	199,243
PG	2023	34	45	5,027	6,054	75,324	45	92,413	55	1,406	1	169,143	639	16,022	61	8,728	33	1,327	5	26,077	6,693	91,346	101,141	2,733	195,220
PG	2024	48	50	7,589	10,091	165,383	60	107,030	39	1,459	1	273,872	707	11,670	55	8,700	41	971	5	21,341	10,798	177,053	115,730	2,430	295,213
PH	2010	25	39	4,308	2,289	25,815	55	20,184	43	1,198	3	47,197	795	16,655	66	5,992	24	2,686	11	25,333	3,084	42,470	26,176	3,884	72,530
PH	2011	25	53	5,159	2,712	28,607	62	17,236	37	179	0	46,022	1,378	22,805	68	9,993	30	873	3	33,671	4,090	51,412	27,229	1,052	79,693
PH	2012	21	52	5,523	3,557	34,995	53	29,287	44	1,560	2	65,842	1,648	27,456	63	13,994	32	2,343	5	43,793	5,205	62,451	43,281	3,903	109,635

Table 5: Tropical purse seine tuna catch and effort by set type and species in the WCPFC Convention Area *(continued)*

UNASSOCIATED SCHOOLS																										ASSOCIATED SCHOOLS										TOTAL				
VESSELS					SKJ								YFT								BET								TOTAL											
Fleet	Year	YB	LOG	DAYS	SETS	MT	%	MT	%	MT	%	MT	SETS	MT	%	MT	%	MT	%	MT	SETS	MT	MT	MT	TOTAL															
PH	2013	27	62	4,401	2,635	22,317	43	28,071	54	1,190	2	51,578	1,440	21,358	57	13,625	36	2,481	7	37,464	4,075	43,675	41,696	3,671	89,042															
PH	2014	27	63	4,268	3,236	45,974	57	31,981	40	2,191	3	80,146	993	15,168	57	9,088	34	2,245	8	26,501	4,229	61,142	41,069	4,436	106,647															
PH	2015	23	34	2,775	1,966	25,279	56	18,758	42	981	2	45,018	810	16,474	56	10,433	35	2,654	9	29,561	2,776	41,753	29,191	3,635	74,579															
PH	2016	17	46	1,878	1,567	26,013	55	20,316	43	745	2	47,074	521	14,063	63	6,744	30	1,416	6	22,223	2,088	40,076	27,060	2,161	69,297															
PH	2017	12	65	1,220	1,005	11,797	48	12,187	50	570	2	24,554	155	2,725	59	1,740	38	159	3	4,624	1,160	14,522	13,927	729	29,178															

(continued on next page...)

Table 5: Tropical purse seine tuna catch and effort by set type and species in the WCPFC Convention Area (*continued*)

PH	2018	12	29	297	340	5,608	64	3,103	35	55	1	8,766	73	1,411	59	937	39	33	1	2,381	413	7,019	4,040	88	11,147
PH	2019	12	93	16	22	392	60	257	39	5	1	654	0	0	0	0	0	0	0	0	22	392	257	5	654
PH	2020	8	63	838	938	10,371	43	13,525	56	241	1	24,137	33	300	72	95	23	20	5	415	971	10,671	13,620	261	24,552
PH	2021	VESSELS		4	0	0	0	0	0	0	0	0	4	33	63	17	33	2	4	52	4	33	17	2	52
PH	2022	YB	LOG	DAYS	0	0	0	0	0	0	0	0	142	1,009	70	376	26	56	4	1,441	142	1,009	376	56	1,441
PH	2023	0	33	104	0	0	0	0	0	0	0	0	68	477	74	146	23	23	4	646	68	477	146	23	646
PH	2024	1	18	615	875	15,480	64	8,357	35	172	1	24,009	25	418	58	253	35	52	7	723	900	15,898	8,610	224	24,732
SB	2010	5	6	483	95	1,892	54	1,570	45	18	1	3,480	353	5,773	59	3,765	39	199	2	9,737	448	7,665	5,335	217	13,217
SB	2011	5	5	1,007	119	1,696	60	1,133	40	8	0	2,837	742	13,271	58	9,065	40	389	2	22,725	861	14,967	10,198	397	25,562
SB	2012	5	5	1,091	98	1,092	52	997	48	7	0	2,096	833	14,190	58	9,862	40	352	1	24,404	931	15,282	10,859	359	26,500
SB	2013	5	5	1,089	213	1,532	34	2,953	65	24	1	4,509	664	11,280	56	8,603	42	377	2	20,260	877	12,812	11,556	401	24,769
SB	2014	5	5	1,210	269	2,849	36	4,993	63	23	0	7,865	786	11,199	50	10,897	48	463	2	22,559	1,055	14,048	15,890	486	30,424
SB	2015	8	6	1,338	388	3,057	33	6,261	67	53	1	9,371	786	10,382	53	8,828	45	211	1	19,421	1,174	13,439	15,089	264	28,792
SB	2016	8	8	2,150	1,040	14,859	60	9,412	38	322	1	24,593	1,065	18,369	59	12,288	40	446	1	31,103	2,105	33,228	21,700	768	55,696
SB	2017	10	9	2,007	1,123	12,675	60	8,315	40	50	0	21,040	870	14,671	59	9,373	38	623	3	24,667	1,993	27,346	17,688	673	45,707
SB	2018	10	10	2,018	801	9,791	68	4,600	32	23	0	14,414	1,159	24,696	64	13,076	34	691	2	38,463	1,960	34,487	17,676	714	52,877
SB	2019	11	11	1,965	847	16,261	79	4,306	21	130	1	20,697	1,099	24,117	66	11,794	33	360	1	36,271	1,946	40,378	16,100	490	56,968
SB	2020	11	10	1,374	601	8,896	66	4,647	34	36	0	13,579	741	10,216	58	7,084	40	243	1	17,543	1,342	19,112	11,731	279	31,122
SB	2021	8	10	1,450	909	12,518	66	6,501	34	83	0	19,102	677	12,345	59	8,444	40	158	1	20,947	1,586	24,863	14,945	241	40,049
SB	2022	9	10	1,412	504	6,480	71	2,636	29	13	0	9,129	837	17,972	71	7,032	28	285	1	25,289	1,341	24,452	9,668	298	34,418
SB	2023	9	10	1,511	491	3,707	54	3,147	46	10	0	6,864	841	16,012	73	5,465	25	604	3	22,081	1,332	19,719	8,612	614	28,945
SB	2024	9	12	1,724	1,547	22,571	72	8,913	28	46	0	31,530	711	14,107	62	8,005	35	496	2	22,608	2,258	36,678	16,918	542	54,138
SV	2010	2	2	178	3	28	100	0	0	0	0	28	136	4,752	65	1,570	21	1,021	14	7,343	139	4,780	1,570	1,021	7,371
SV	2011	2	2	216	3	15	18	69	82	0	0	84	185	8,362	69	1,643	14	2,137	18	12,142	188	8,377	1,712	2,137	12,226
SV	2012	2	2	265	4	15	100	0	0	0	0	15	213	8,433	62	2,821	21	2,378	17	13,632	217	8,448	2,821	2,378	13,647
SV	2013	4	4	354	13	272	66	139	34	1	0	412	296	11,750	70	2,780	17	2,275	14	16,805	309	12,022	2,919	2,276	17,217
SV	2014	4	4	440	92	2,010	100	8	0	0	0	2,018	303	10,243	66	2,986	19	2,231	14	15,460	395	12,253	2,994	2,231	17,478
SV	2015	2	2	179	7	0	0	0	0	0	0	0	177	11,942	78	2,005	13	1,394	9	15,341	184	11,942	2,005	1,394	15,341
SV	2016	3	2	107	6	669	99	7	1	0	0	676	95	5,009	76	724	11	893	13	6,626	101	5,678	731	893	7,302
SV	2017	1	2	73	2	0	0	31	100	0	0	31	73	2,958	69	560	13	768	18	4,286	75	2,958	591	768	4,317
SV	2018	1	2	82	6	275	100	0	0	0	0	275	82	3,341	76	429	10	644	15	4,414	88	3,616	429	644	4,689
SV	2019	2	2	41	2	0	0	0	0	0	0	0	50	2,242	76	331	11	376	13	2,949	52	2,242	331	376	2,949
SV	2020	2	2	61	5	246	91	24	9	0	0	270	58	2,654	64	599	15	866	21	4,119	63	2,900	623	866	4,389
SV	2021	2	2	87	0	0	0	0	0	0	0	0	93	3,663	62	1,124	19	1,079	18	5,866	93	3,663	1,124	1,079	5,866
SV	2022	2	2	69	0	0	0	0	0	0	0	0	76	2,630	60	892	20	857	20	4,379	76	2,630	892	857	4,379
SV	2023	2	2	91	3	109	99	1	1	0	0	110	96	4,640	79	683	12	579	10	5,902	99	4,749	684	579	6,012
TV	2010	1	1	254	319	6,727	75	2,234	25	35	0	8,996	40	1,035	66	328	21	195	13	1,558	359	7,762	2,562	230	10,554
TV	2011	1	1	270	282	3,794	71	1,526	29	14	0	5,334	58	1,682	81	292	14	108	5	2,082	340	5,476	1,818	122	7,416
TV	2012	1	1	247	298	3,189	57	2,330	42	32	1	5,551	91	4,435	81	816	15	250	5	5,501	389	7,624	3,146	282	11,052
TV	2013	1	1	265	353	7,176	93	456	6	88	1	7,720	79	2,958	80	629	17	110	3	3,697	432	10,134	1,085	198	11,417
TV	2014	1	1	146	146	3,382	92	260	7	33	1	3,675	49	1,962	87	248	11	57	3	2,267	195	5,344	508	90	5,942
TV	2015	1	1	158	174	3,588	96	131	4	1	0	3,720	36	1,666	94	97	5	18	1	1,781	210	5,254	228	19	5,501
TV	2016	1	1	200	93	2,444	97	76	3	1	0	2,521	59	2,683	75	655	18	252	7	3,590	152	5,127	731	253	6,111
TV	2017	2	2	152	84	1,814	59	1,183	39	60	2	3,057	59	1,755	68	700	27	130	5	2,585	143	3,569	1,883	190	5,642
TV	2018	1	1	201	159	3,170	74	1,073	25	44	1	4,287	107	5,567	81	491	7	790	12	6,848	266	8,737	1,564	834	11,135
TV	2019	1	1	183	106	2,698	86	418	13	11	0	3,127	83	3,384	93	170	5	94	3	3,648	189	6,082	588	105	6,775
TV	2020	3	3	210	96	2,200	89	256	10	4	0	2,460	119	6,380	85	572	8	553	7	7,505	215	8,580	828	557	9,965
TV	2021	6	6	910	697	14,659	79	3,768	20	69	0	18,496	370	12,366	83	1,717	11	885	6	14,968	1,067	27,025	5,485	954	33,464
TV	2022	6	6	1,083	950	15,301	78	4,099	21	99	1	19,499	474	18,192	85	2,323	11	969	5	21,484	1,424	33,493	6,422	1,068	40,983
TV	2023	6	6	1,231	1,203	17,280	59	11,707	40	74	0	29,061	414	16,152	89	1,185	7	765	4	18,102	1,617	33,432	12,892	839	47,163

Table 5: Tropical purse seine tuna catch and effort by set type and species in the WCPFC Convention Area *(continued)*

UNASSOCIATED SCHOOLS																										ASSOCIATED SCHOOLS												TOTAL						
VESSELS					SKJ								YFT				BET				TOTAL				SKJ								YFT				BET				TOTAL			
Fleet	Year	YB	LOG	DAYS	SETS	MT	%	MT	%	MT	%	MT	SETS	MT	%	MT	%	MT	%	MT	SETS	MT	MT	MT	TOTAL																			
TV	2024	6	6	960	1,156	24,440	81	5,512	18	127	0	30,079	256	11,789	84	1,717	12	458	3	13,964	1,412	36,229	7,229	585	44,043																			
TW	2010	34	30	7,689	6,403	98,868	81	23,048	19	723	1	122,639	1,707	54,830	72	15,482	20	5,900	8	76,212	8,110	153,698	38,530	6,623	198,851																			
TW	2011	34	30	8,640	4,759	56,097	81	12,315	18	571	1	68,983	2,954	78,776	74	19,684	18	8,490	8	106,950	7,713	134,873	31,999	9,061	175,933																			
TW	2012	34	32	7,028	4,653	60,859	71	24,187	28	917	1	85,963	2,936	89,379	78	17,320	15	7,989	7	114,688	7,589	150,238	41,507	8,906	200,651																			
TW	2013	34	33	7,648	6,159	83,081	83	16,318	16	1,048	1	100,447	2,634	81,584	73	20,994	19	9,455	8	112,033	8,793	164,665	37,312	10,503	212,480																			

Table 5: Tropical purse seine tuna catch and effort by set type and species in the WCPFC Convention Area (*continued*)

UNASSOCIATED SCHOOLS														ASSOCIATED SCHOOLS														TOTAL				
VESSELS					SKJ		YFT		BET		TOTAL	SKJ		YFT		BET		TOTAL	SKJ		YFT		BET		TOTAL							
Fleet	Year	YB	LOG	DAYS	SETS	MT	%	MT	%	MT	%	MT	SETS	MT	%	MT	%	MT	%	MT	SETS	MT	MT	MT	TOTAL							
TW	2014	34	35	6,764	5,722	103,636	88	13,203	11	1,131	1	117,970	2,643	90,329	76	20,593	17	8,242	7	119,164	8,365	193,965	33,796	9,373	237,134							
TW	2015	34	35	5,013	4,600	79,143	76	24,098	23	1,370	1	104,611	1,769	71,630	80	12,365	14	5,642	6	89,637	6,369	150,773	36,463	7,012	194,248							
TW	2016	34	31	5,209	4,759	80,699	71	32,322	28	1,320	1	114,341	1,505	54,811	74	13,049	18	6,187	8	74,047	6,264	135,510	45,371	7,507	188,388							
TW	2017	31	29	5,386	5,151	64,010	67	30,950	32	982	1	95,942	1,899	56,013	77	12,824	18	4,139	6	72,976	7,050	120,023	43,774	5,121	168,918							
TW	2018	27	29	5,123	4,607	82,168	85	14,071	15	657	1	96,896	2,281	78,397	79	15,863	16	5,279	5	99,539	6,888	160,565	29,934	5,936	196,435							
TW	2019	30	30	5,165	5,624	119,761	82	24,534	17	961	1	145,256	2,028	76,817	81	14,208	15	4,306	5	95,331	7,652	196,578	38,742	5,267	240,587							
TW	2020	29	28	4,255	4,049	74,624	84	13,907	16	501	1	89,032	1,872	59,016	69	19,250	22	7,673	9	85,939	5,921	133,640	33,157	8,174	174,971							
TW	2021	29	30	4,908	4,439	78,805	73	28,259	26	736	1	107,800	2,186	81,533	76	17,903	17	7,709	7	107,145	6,625	160,338	46,162	8,445	214,945							
TW	2022	26	27	4,514	4,011	71,033	82	15,246	18	491	1	86,770	2,488	95,858	79	17,899	15	8,313	7	122,070	6,499	166,891	33,145	8,804	208,840							
TW	2023	24	25	3,926	4,028	64,508	71	25,240	28	551	1	90,299	1,664	65,700	83	9,139	12	3,859	5	78,698	5,692	130,208	34,379	4,410	168,997							
TW	2024	24	24	4,215	6,061	138,509	89	16,084	10	603	0	155,196	1,406	58,218	84	7,927	11	3,289	5	69,434	7,467	196,727	24,011	3,892	224,630							
US	2010	37	37	8,029	6,307	109,753	83	21,842	16	1,010	1	132,605	2,390	90,995	81	15,180	13	6,367	6	112,542	8,697	200,748	37,022	7,377	245,147							
US	2011	37	38	7,722	2,991	48,840	82	10,825	18	122	0	59,787	3,379	112,139	78	20,003	14	11,312	8	143,454	6,370	160,979	30,828	11,434	203,241							
US	2012	39	40	8,567	5,589	98,422	80	23,948	19	1,192	1	123,562	3,441	109,469	80	18,134	13	8,536	6	136,139	9,030	207,891	42,082	9,728	259,701							
US	2013	40	41	8,128	4,976	96,378	91	8,184	8	794	1	105,356	3,120	114,083	76	23,556	16	11,673	8	149,312	8,096	210,461	31,740	12,467	254,668							
US	2014	40	40	8,901	6,215	116,937	84	22,113	16	425	0	139,475	3,685	147,953	85	17,025	10	8,552	5	173,530	9,900	264,890	39,138	8,977	313,005							
US	2015	39	38	6,795	5,857	111,527	89	13,218	11	617	0	125,362	2,036	96,505	86	11,107	10	5,189	5	112,801	7,893	208,032	24,325	5,806	238,163							
US	2016	37	35	5,433	3,321	75,624	87	10,446	12	399	0	86,469	2,171	88,629	77	17,288	15	8,748	8	114,665	5,492	164,253	27,734	9,147	201,134							
US	2017	34	35	5,477	2,652	43,945	74	15,303	26	298	1	59,546	2,442	84,360	78	16,093	15	7,252	7	107,705	5,094	128,305	31,396	7,550	167,251							
US	2018	34	34	5,607	2,807	53,854	78	15,027	22	212	0	69,093	2,893	101,760	79	16,277	13	10,321	8	128,358	5,700	155,614	31,304	10,533	197,451							
US	2019	31	32	4,192	3,119	69,654	85	12,443	15	301	0	82,398	1,894	69,782	82	10,471	12	5,008	6	85,261	5,013	139,436	22,914	5,309	167,659							
US	2020	23	23	3,154	1,577	38,271	95	1,831	5	202	1	40,304	1,725	73,723	76	13,268	14	10,513	11	97,504	3,302	111,994	15,099	10,715	137,808							
US	2021	21	21	1,245	77	1,717	93	126	7	11	1	1,854	1,176	34,568	74	6,550	14	5,751	12	46,869	1,253	36,285	6,676	5,762	48,723							
US	2022	14	13	1,004	189	4,867	83	1,001	17	15	0	5,883	865	29,818	73	5,458	13	5,836	14	41,112	1,054	34,685	6,459	5,851	46,995							
US	2023	13	13	1,344	532	9,174	72	3,544	28	42	0	12,760	997	41,129	79	3,604	7	7,093	14	51,826	1,529	50,303	7,148	7,135	64,586							
US	2024	12	14	974	329	9,068	99	116	1	1	0	9,185	801	45,335	84	3,701	7	4,631	9	53,667	1,130	54,403	3,817	4,632	62,852							
VU	2010	5	6	832	469	10,121	76	3,139	24	16	0	13,276	198	8,286	79	1,621	16	533	5	10,440	667	18,407	4,760	549	23,716							
VU	2011	6	5	1,070	287	5,442	81	1,215	18	37	1	6,694	391	14,321	86	1,996	12	370	2	16,687	678	19,763	3,211	407	23,381							
VU	2012	6	5	730	472	9,449	64	5,220	35	158	1	14,827	268	9,893	81	1,492	12	790	6	12,175	740	19,342	6,712	948	27,002							
VU	2013	6	4	914	607	11,295	84	2,152	16	73	1	13,520	263	10,432	82	1,746	14	575	5	12,753	870	21,727	3,898	648	26,273							
VU	2014	3	4	651	362	8,610	87	1,255	13	42	0	9,907	230	9,370	86	1,118	10	374	3	10,862	592	17,980	2,373	416	20,769							
VU	2015	3	3	272	105	1,641	95	80	5	1	0	1,722	125	5,917	89	558	8	148	2	6,623	230	7,558	638	149	8,345							
VU	2016	3	3	118	40	1,246	90	122	9	11	1	1,379	37	2,589	86	68	2	358	12	3,015	77	3,835	190	369	4,394							
VU	2017	3	3	240	119	1,447	65	788	35	7	0	2,242	122	2,984	65	654	14	964	21	4,602	241	4,431	1,442	971	6,844							
VU	2018	2	2	298	337	6,395	81	1,468	19	53	1	7,916	96	3,927	85	414	9	269	6	4,610	433	10,322	1,882	322	12,526							
VU	2019	5	6	557	739	23,309	89	2,641	10	332	1	26,282	138	7,217	84	634	7	708	8	8,559	877	30,526	3,275	1,040	34,841							
VU	2020	6	6	861	954	23,037	81	5,075	18	232	1	28,344	330	13,588	74	2,657	15	2,059	11	18,304	1,284	36,625	7,732	2,291	46,648							
VU	2021	2	7	1,006	943	20,453	77	6,139	23	139	1	26,731	449	17,117	79	3,105	14	1,473	7	21,695	1,392	37,570	9,244	1,612	48,426							
VU	2022	8	8	1,230	1,429	31,131	79	8,205	21	217	1	39,553	550	22,522	81	3,747	13	1,629	6	27,898	1,979	53,653	11,952	1,846	67,451							
VU	2023	8	8	1,042	1,184	23,934	69	10,706	31	184	1	34,824	362	16,001	90	1,247	7	572	3	17,820	1,546	39,935	11,953	756	52,644							
VU	2024	2	3	425	564	16,412	89	1,983	11	28	0	18,423	129	7,341	85	1,001	12	296	3	8,638	693	23,753	2,984	324	27,061							

Table 6: Annual summary of tropical purse seine tuna catch and effort by set type and species in the WCPFC Convention Area (Table 4 aggregated across Fleets)

UNASSOCIATED SCHOOLS												ASSOCIATED SCHOOLS								TOTAL							
VESSELS				SKJ		YFT		BET		TOTAL		SKJ		YFT		BET		TOTAL		SKJ		YFT		BET		TOTAL	
Year	YB	LOG	DAYS	SETS	MT	%	MT	%	MT	%	MT	SETS	MT	%	MT	%	MT	%	MT	SETS	MT	MT	MT	MT	TOTAL		
2010	281	276	50,705	38,119	694,951	76	212,776	23	8,713	1	916,440	12,950	416,508	73	109,427	19	44,956	8	570,891	51,069	1,111,459	322,203	53,669	1,487,331			
2011	284	295	56,995	30,060	435,630	76	134,727	23	3,486	1	573,843	21,712	614,567	73	152,751	18	71,831	9	839,149	51,772	1,050,197	287,478	75,317	1,412,992			
2012	290	310	53,056	35,994	621,775	74	214,826	25	8,790	1	845,391	20,366	600,462	76	136,762	17	56,963	7	794,187	56,360	1,222,237	351,588	65,753	1,639,578			
2013	302	327	53,992	38,300	659,440	80	158,565	19	9,432	1	827,437	17,873	563,165	72	153,223	20	62,773	8	779,161	56,173	1,222,605	311,788	72,205	1,606,598			
2014	312	339	52,541	38,257	744,094	78	203,612	21	10,109	1	957,815	18,143	638,627	77	128,421	16	58,337	7	825,385	56,400	1,382,721	332,033	68,446	1,783,200			
2015	312	304	41,274	33,415	692,787	78	179,296	20	10,913	1	882,996	13,556	554,557	80	101,789	15	40,128	6	696,474	46,971	1,247,344	281,085	51,041	1,579,470			
2016	297	295	43,322	32,270	655,093	74	223,264	25	11,026	1	889,383	14,107	537,775	77	113,237	16	50,172	7	701,184	46,377	1,192,868	336,501	61,198	1,590,567			
2017	287	324	46,660	33,540	516,048	65	263,450	33	9,534	1	789,032	16,443	519,567	77	112,182	17	46,500	7	678,249	49,983	1,035,615	375,632	56,034	1,467,281			
2018	276	293	44,162	32,710	621,194	75	193,644	23	11,182	1	826,020	18,209	670,319	80	117,385	14	52,642	6	840,346	50,919	1,291,513	311,029	63,824	1,666,366			
2019	285	367	41,481	37,006	864,889	81	194,614	18	8,908	1	1,068,411	14,902	602,475	82	98,517	13	33,629	5	734,621	51,908	1,467,364	293,131	42,537	1,803,032			
2020	269	322	39,340	32,355	628,346	75	203,143	24	5,969	1	837,458	15,084	570,261	75	132,265	17	57,955	8	760,481	47,439	1,198,607	335,408	63,924	1,597,939			
2021	253	303	38,668	28,332	534,916	72	197,969	27	5,850	1	738,735	17,201	585,041	76	127,095	16	58,547	8	770,683	45,533	1,119,957	325,064	64,397	1,509,418			
2022	244	308	38,063	30,329	557,860	77	165,584	23	4,418	1	727,862	17,971	649,797	79	113,279	14	57,089	7	820,165	48,300	1,207,657	278,863	61,507	1,548,027			
2023	256	291	37,411	30,243	521,003	65	271,069	34	5,346	1	797,418	15,835	599,259	82	84,537	12	42,821	6	726,617	46,078	1,120,262	355,606	48,167	1,524,035			
2024	244	272	39,296	44,672	955,377	80	234,351	20	5,063	0	1,194,791	12,202	522,659	82	82,810	13	34,017	5	639,486	56,874	1,478,036	317,161	39,080	1,834,277			

Notes:

1. Estimates are based on aggregate data and raised logsheet data with species composition adjusted using observer sampling with grab sample bias correction. Note that these estimates may differ from the annual catch estimates provided by CCMs.
2. Tropical WCPFC Area (20N–20S). Estimates exclude domestic purse seine catch/effort in Philippines, Indonesia and Vietnam. [we hope to include estimates of domestic-based Philippines catch/effort in their home EEZ and HSP #1 in future versions of this table].
3. Two sources of estimates of vessel numbers are provided (i) those provided by CCMs with their annual catch estimates (and therefore appear in the WCPFC Yearbook) and (ii) estimates of vessel numbers from unraised operational data available to SPC.
4. The estimate of Japanese purse seine vessels fishing in the tropical fishery (20N-20S) has been determined by only considering vessel numbers in the categories >200 GRT.
5. There are several instances where vessel numbers from unraised logbook data are higher than the vessel numbers provided by the CCM. The reasons for these occurrences include: (i) situations where one vessel became inactive during the calendar year and was replaced by a new vessel – the vessel number from the operational data is based on a count of the total distinct vessels fishing throughout the year; (ii) instances where there are inconsistencies in the charter/flag assignment between the vessel numbers provided by CCMs and the operational logsheet data (e.g. Philippine-flagged vessels chartered to PNG – this will require follow-up and clarification with relevant CCMs).
6. ASSOCIATED covers sets on Drifting FAD, Log and Anchored FAD. Catch/effort for sets on ANIMALS is not shown separately but are included in the TOTAL.
7. Includes Catch and Effort in archipelagic waters.
8. Total Associated sets may differ from values provided in Table 3. The reasons for the differences include, (i) sets in archipelagic waters are included in this table but not in Table 3, (ii) the raising process in Table 3 is undertaken at the EEZ/AW level while the raising in this Table is undertaken at the WCPFC Area level; this will be an issue in cases where logbook coverage is not 100%. Future versions of Tables 3 and 7 will be reconciled.

Fleet codes

- | | |
|--------------------------|-------------------------|
| • CK - Cook Islands | • MH - Marshall Islands |
| • CN - China | • NZ - New Zealand |
| • ES - EU-Spain | • PG - PNG |
| • FM - FSM | • PH - Philippines (DW) |
| • JP - Japan | • SB - Solomon Is. |
| • KI - Kiribati | • SV - El Salvador |
| • KR - Republic of Korea | • NR - Nauru |
| | • TV - Tuvalu |
| | • TW - Chinese Taipei |
| | • US - USA |
| | • VU - Vanuatu |

Table 7: Annual high seas FAD sets, by fleet, 2015–2024

CCM	2015	2016	2017	2018	2019	2020	2021	2022	2023	2024	Notes
CHINA	0	0	1	2	0	0	0	16	0	0	
COOK ISLANDS	0	0	0	0	42	14	63	59	13	116	4, 5
ECUADOR	80	4	103	138	57	76	78	88	55	39	4, 5
EL SALVADOR	87	71	27	53	38	48	52	47	57	1	4
EUROPEAN UNION	200	90	133	141	111	180	277	279	246	289	4
FSM	60	164	51	135	305	224	230	92	238	165	
JAPAN	1	3	0	0	2	11	4	0	0	2	
KIRIBATI	242	394	422	471	466	340	327	222	630	179	7
MARSHALL ISLANDS	168	65	423	143	265	277	282	141	203	59	4
NAURU	0	0	0	51	55	224	55	56	198	66	4
NEW ZEALAND	23	7	75	40	36	2	0	0	0	0	4
PAPUA NEW GUINEA	134	14	0	0	0	1	0	0	0	0	
PHILIPPINES	3	0	0	0	32	20	3	8	0	0	6
REPUBLIC OF KOREA	51	104	3	116	87	74	76	17	25	33	
SOLOMON ISLANDS	0	0	22	16	15	2	0	0	12	12	4
CHINESE TAIPEI	28	58	0	6	23	17	26	35	23	36	
TUVALU	4	34	41	27	26	77	145	31	137	30	4
USA	643	459	0	508	444	728	643	403	540	448	3
VANUATU	0	37	100	24	17	90	101	63	113	21	
TOTAL	1,724	1,504	1,401	1,871	2,021	2,405	2,362	1,557	2,490	1,496	

Notes:

1. This table has been prepared considering the language of CMM 2016-01 paragraph 18 footnote 5 that states “The high seas FAD closure in paragraph 18 does not apply in 2017 to a CCM that has achieved a verifiable reduction in bigeye catches by its purse seine vessels to 55% from current levels (2010-2012), to be reviewed on the basis of the advice of the Scientific Committee. A CCM that has qualified for the above-mentioned exemption shall maintain a verifiable reduction in bigeye catches by its purse seine vessels to 55% from the reference levels (2010-2012) also in the course of 2017.”
2. High seas FAD sets are sourced from operational logbook data noting that some data are provisional at this stage.
3. The sets presented in this Table exclude effort in the overlap area because it takes into account the WCPFC9 decision on the application of measures in the part of the WCPF Convention Area that overlaps with the IATTC Convention Area (WCPFC9 Summary Report paragraph 80). European Union is a WCPFC member who is also an IATTC member, notified WCPFC in April 2013, of their choice of IATTC measures in the overlap area. Given that Ecuador and El Salvador are members of IATTC, the rules of the RFMO of which it is a member apply in the overlap area between WCPFC and IATTC, even if the CCM is a cooperating non-member of the other RFMO. The USA notified WCPFC in November 2021 of their choice of IATTC measures in the overlap area.
4. At WCPFC13, the discussions confirmed that paragraph 18 measures would be implemented in 2017 and that the following fleets would have qualified for and would apply footnote 5 of CMM 2016-01: El Salvador, Ecuador, European Union, Republic of Marshall Islands, New Zealand, Solomon Islands, Tuvalu and Vanuatu.
5. Despite Note 4, WCPFC13 determined Ecuador’s participatory rights were zero days in the high seas of the Convention Area in 2017.
6. The measures that the Philippines will take are in Attachment C of CMM 2016-01, or its superseding obligation. In 2017, the Philippines expended 2,696 days in the HSP1 during 2017 and no reported purse seine effort in any other high seas areas. These values do not include fishing in the HSP #1.
7. In addition to the FAD measures 2015 and 2016, except for those Kiribati flagged vessels fishing in the adjacent high seas, it shall be prohibited to set on FADs in the high seas, unless the Commission decides on other alternative measures at its 2014 or 2015 or 2016 annual meeting.

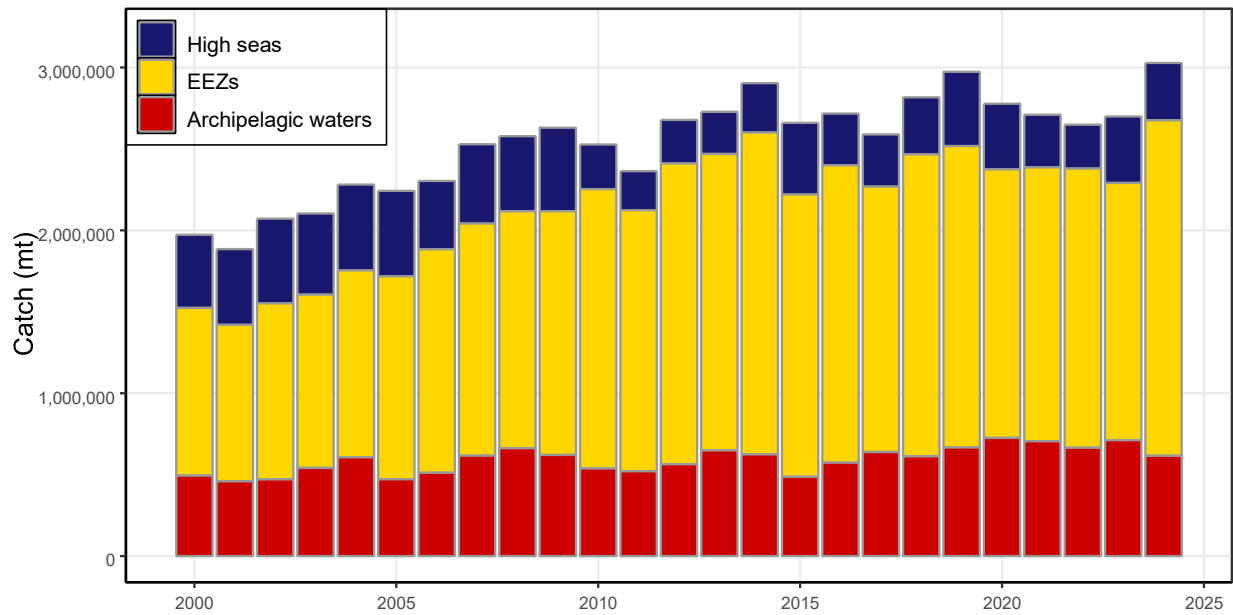


Figure 1: Tuna catch estimates (mt) in the WCPFC–CA, by broad area, all gear types. Tuna species include albacore, bigeye, skipjack and yellowfin. Areas are: Archipelagic waters (AWs), national waters (EEZs, excluded AWs) and the high seas for all gear types combined

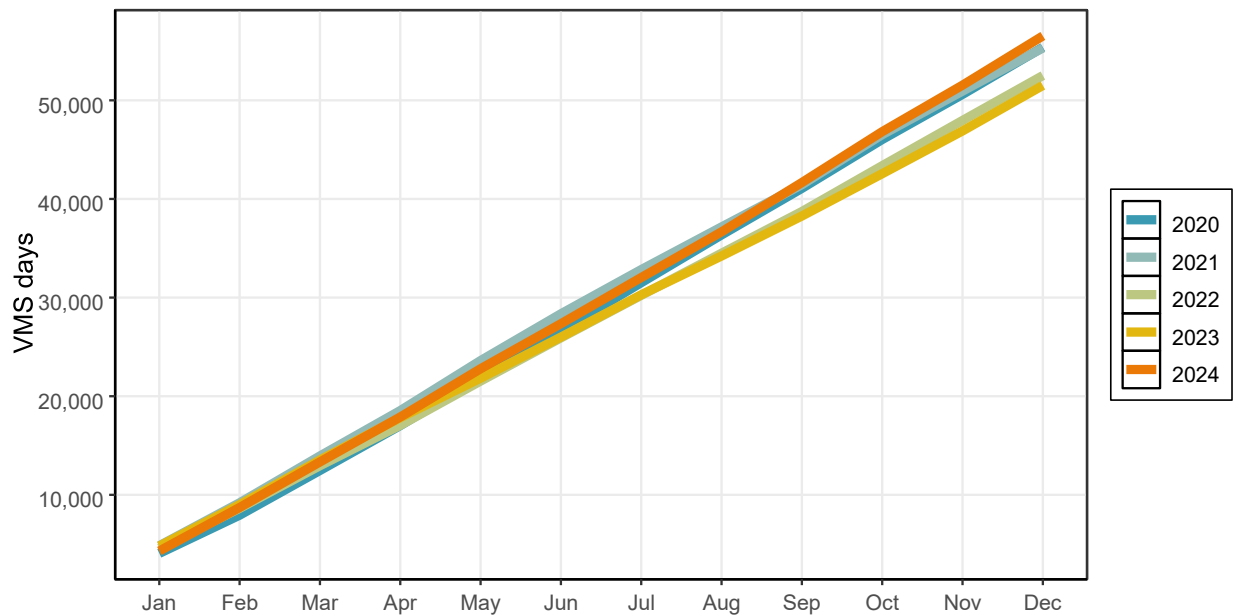


Figure 2: Cumulative tropical purse seine days at sea by month, 2020-2024, as measured by VMS (excludes days in port)

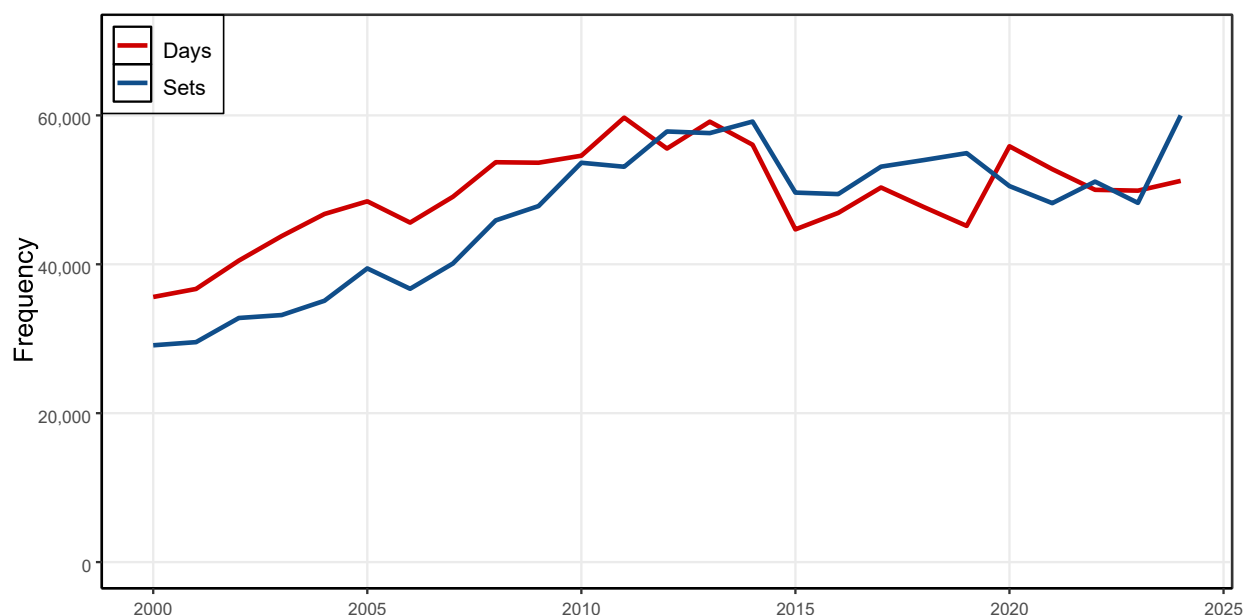


Figure 3: Annual trends in purse seine effort in the WCPFC Convention Area between 20N and 20S. ‘DAYS’ – days fishing and searching. Excludes domestic purse seine effort in Philippines and Indonesia, but includes Philippine domestic-based effort in HSP#1. Estimates are based on raised logsheet data

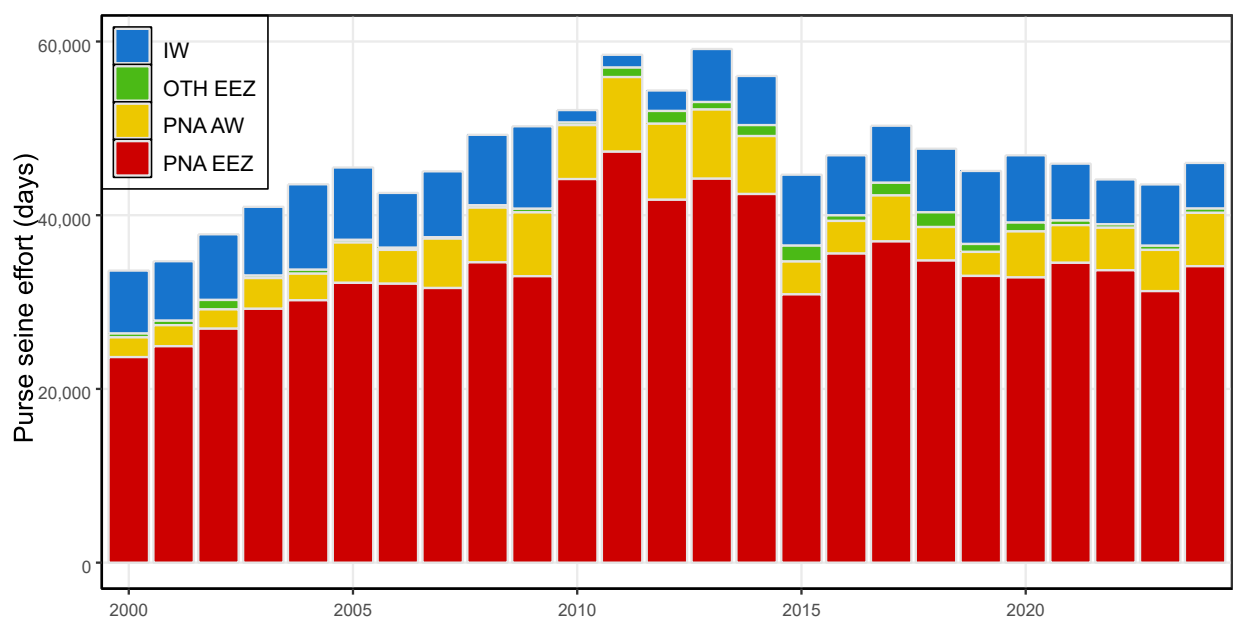


Figure 4: Purse seine effort (days fishing and searching) in the WCPFC Convention Area between 20N and 20S. Excludes domestic purse seine effort in Philippines and Indonesia. Estimates are based on raised logsheet data

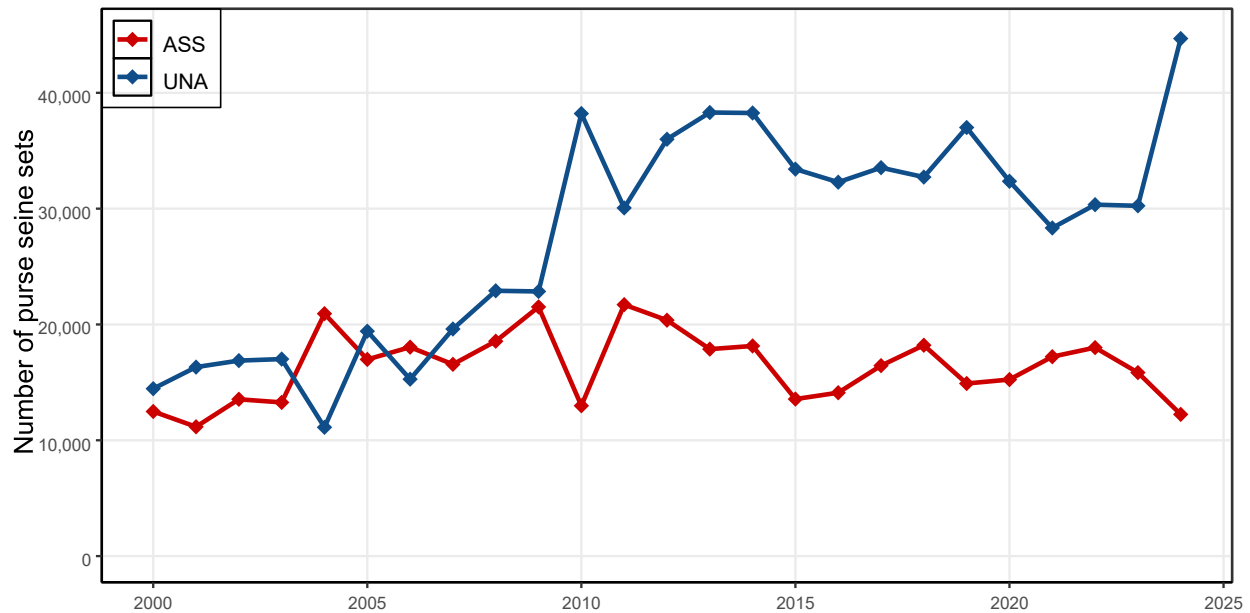


Figure 5: Sets by set type made in the WCPO tropical purse seine fishery, 2000-2024. Associated (ASS) and Unassociated (UNA) sets. Activities in the domestic purse seine fisheries of Indonesia and Philippines are excluded. Associated sets include animal-associated sets

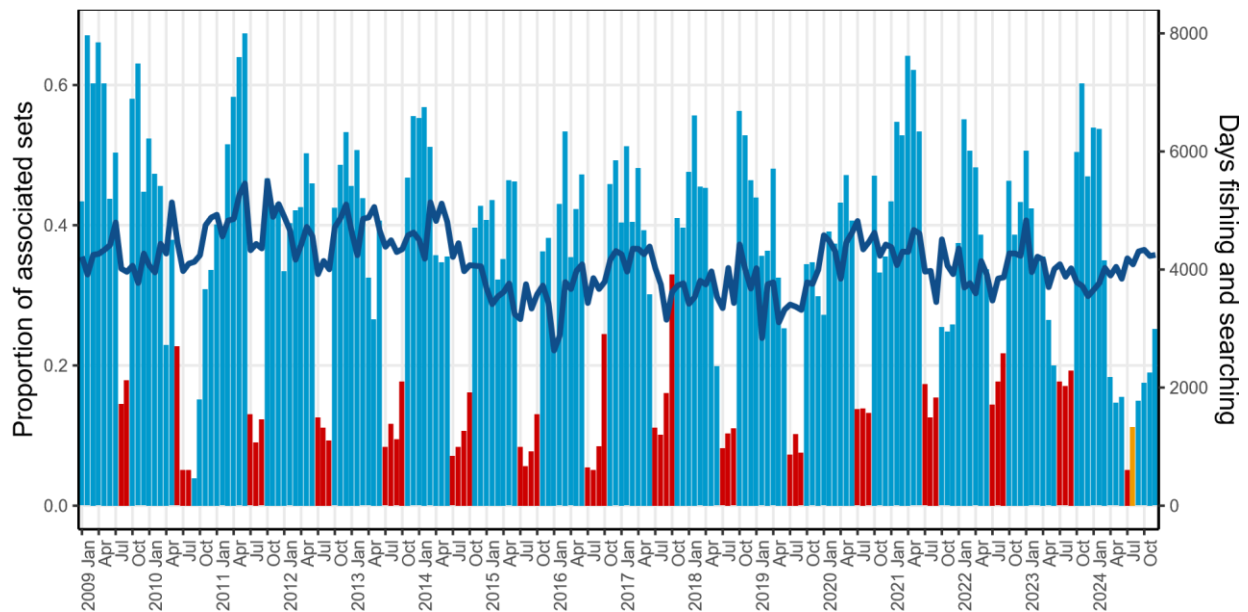


Figure 6: Proportion of the total purse seine fishing activity comprising associated sets, as indicated by logsheet data. Red bars indicate the FAD closure months; orange bars indicate a half month FAD closure. Total effort in days is shown by the plotted line. Activities in the domestic purse seine fisheries of Indonesia and Philippines are excluded

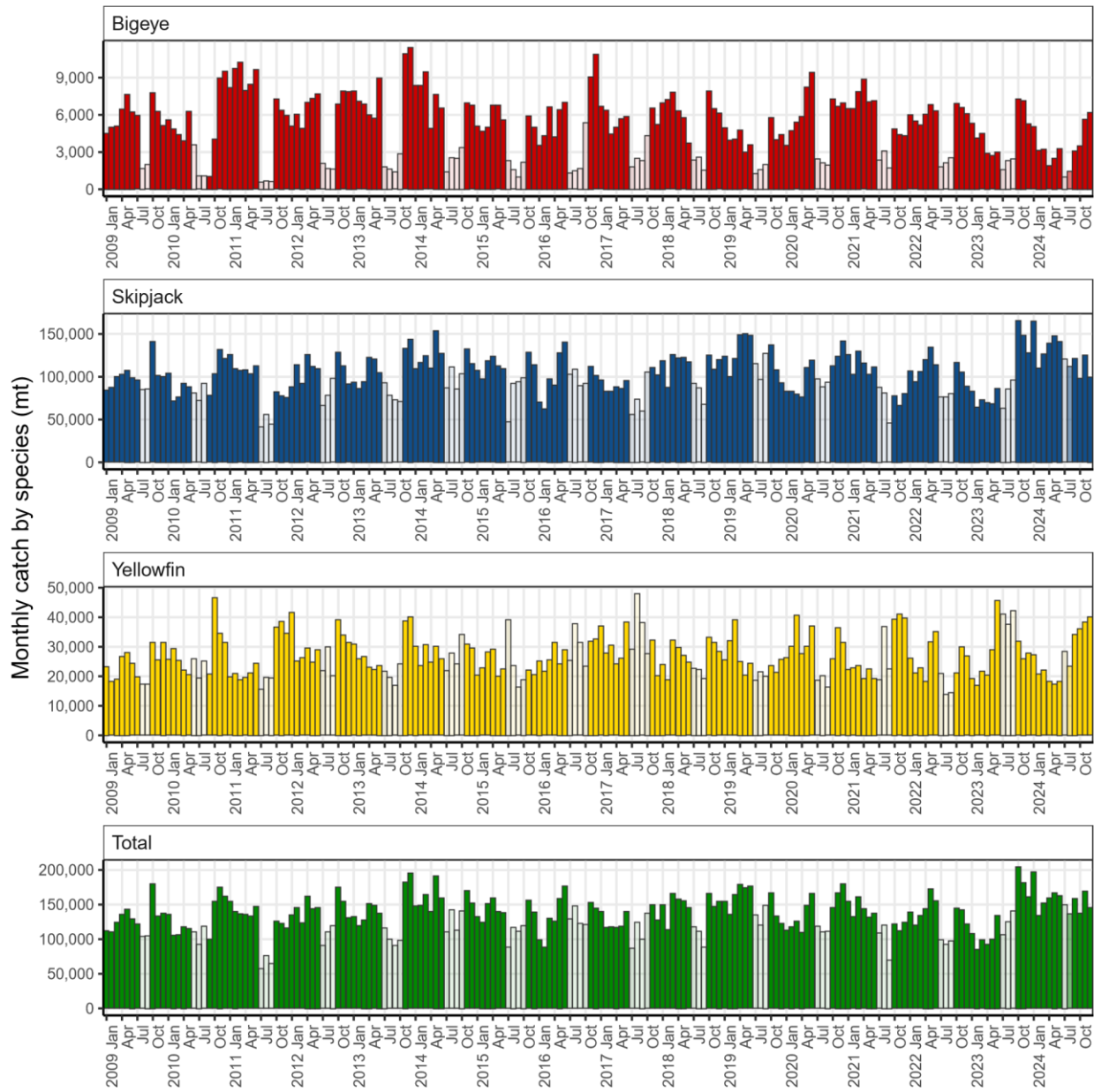


Figure 7: Monthly purse seine catch by species, using raised logsheet data with species composition adjusted using observer sampling with grab sample bias correction. FAD closure months are shaded in lighter colour. Data excludes the domestic fisheries of Indonesia and Philippines

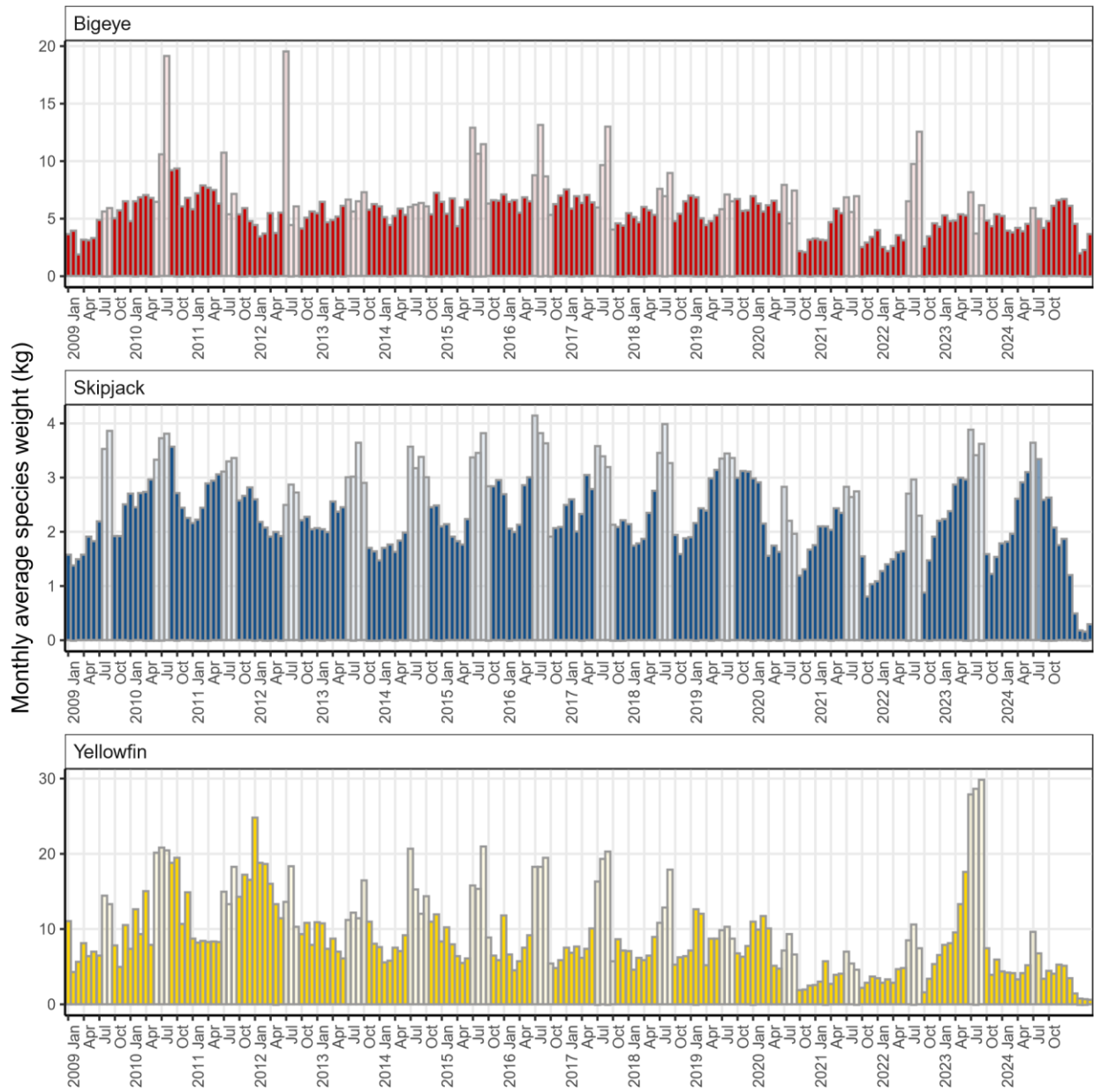


Figure 8: Monthly average weight of bigeye, skipjack and yellowfin tuna estimated from observer sampling data, 2009-2024. FAD closure months are shaded in lighter colour. Data excludes the domestic fisheries of Indonesia and Philippines. Coverage of observer data in years 2020-2022 was approximately 50%, 15% and 17% respectively, due to the impacts of COVID-19 and biased to certain fleets only; observer coverage for 2023 and 2024 was around 69% and 75%, respectively, at the time of preparing this paper.

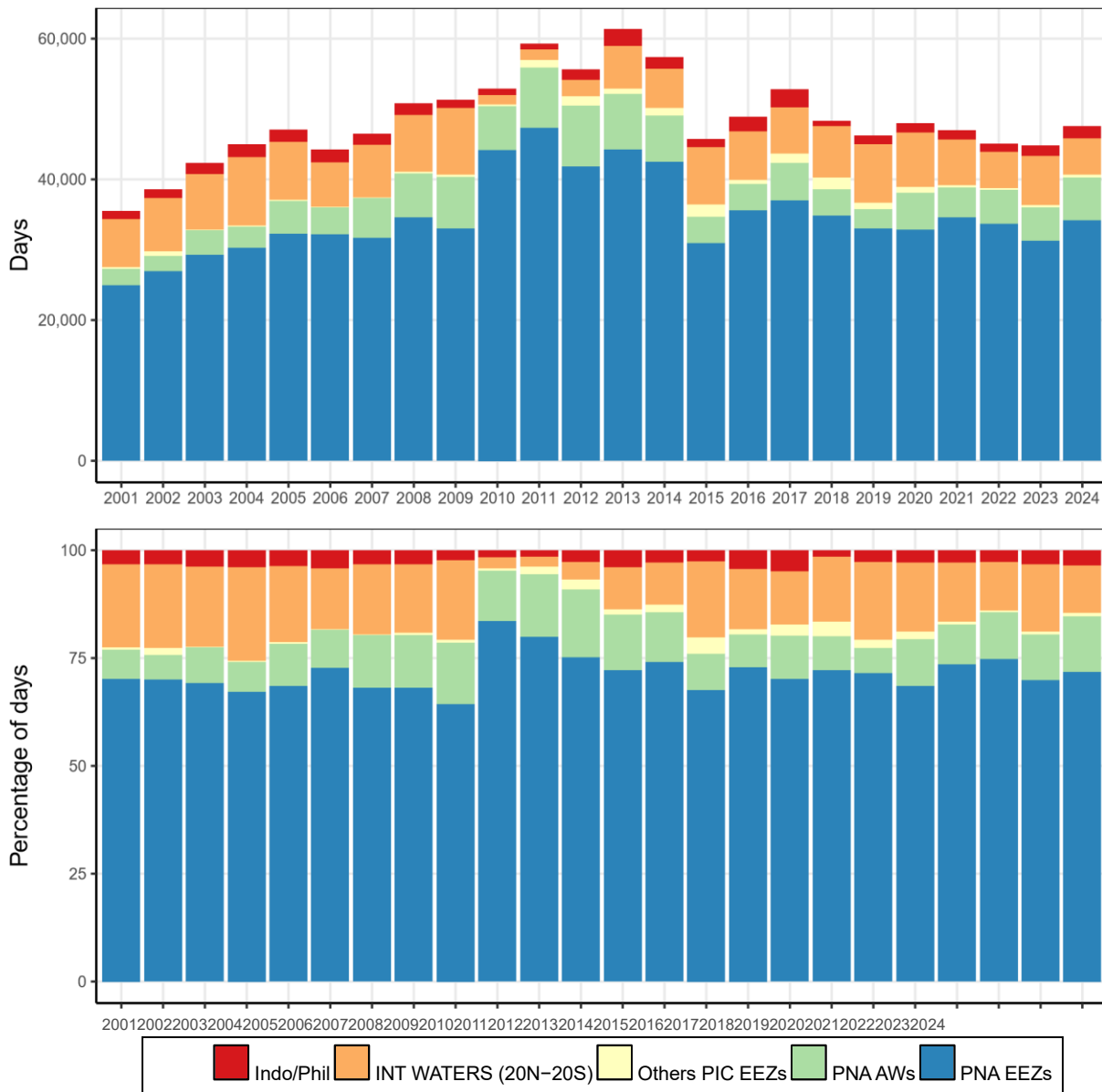


Figure 9: Tropical purse seine effort (20N-20S) in waters under national jurisdiction (EEZs and AWs) and in high seas (20N-20S) (days fished–top and percentage days fished–bottom). Refer to NOTES under TABLE 1 above for additional details.

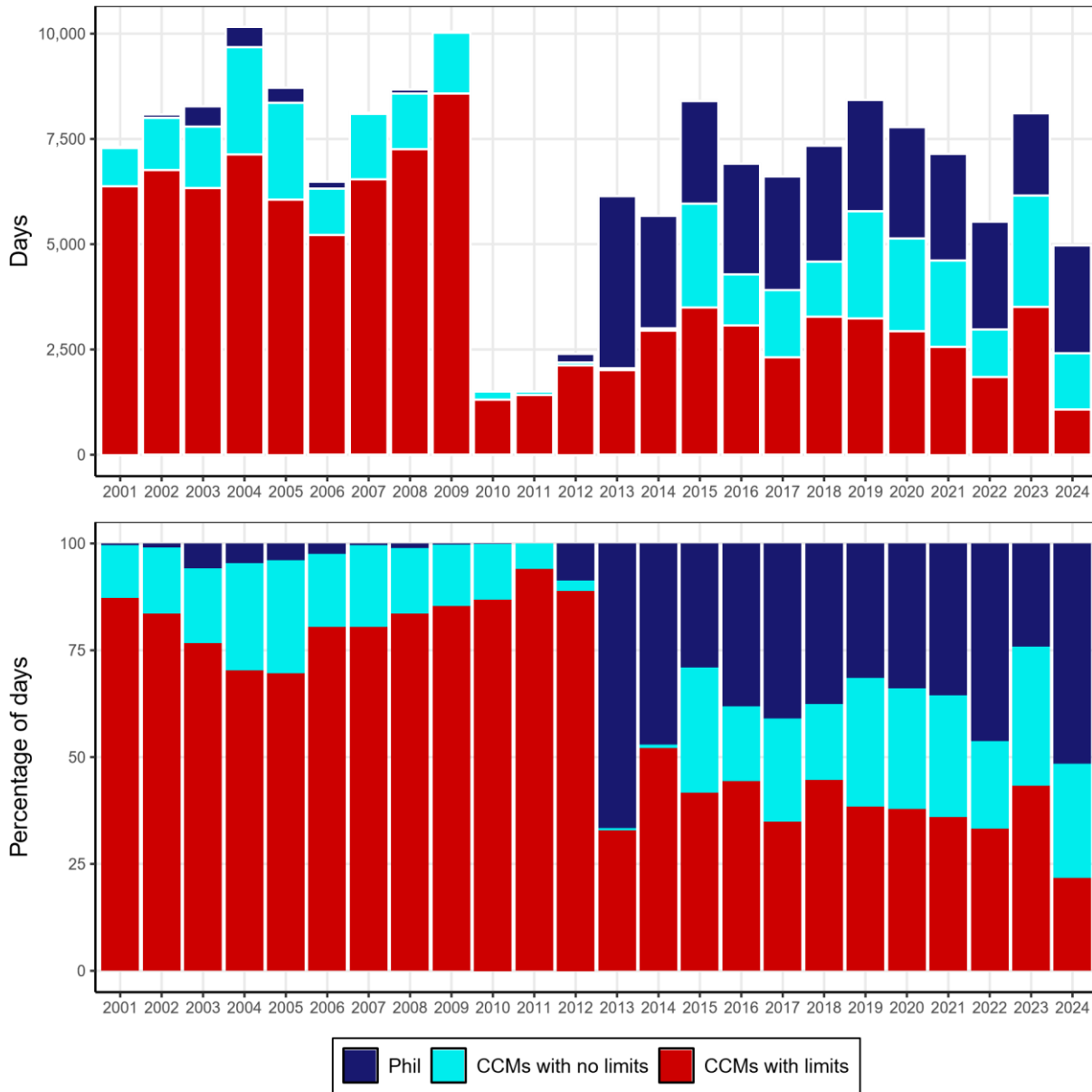
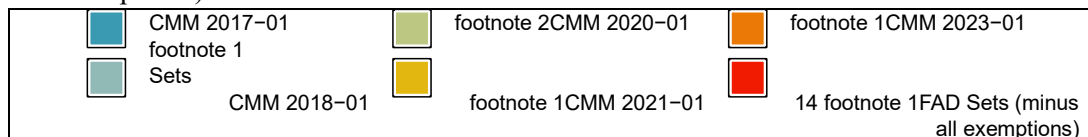


Figure 10: Purse seine effort in high seas (20N–20S), by fleet category (days fished–top and percentage days fished–bottom). (Refer to NOTES under TABLE 2 above ‘CCMs with no limits’ are Pacific Island fleets fishing in high seas adjacent to their home waters; Philippines effort data prior to 2013 are not available or under-reported).



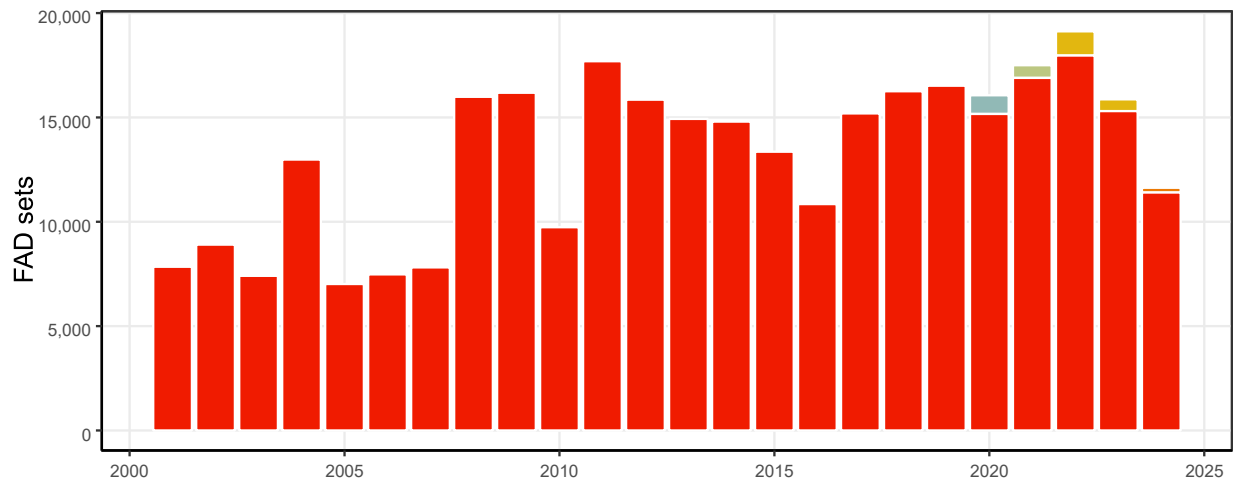


Figure 11: Estimated FAD sets undertaken in the tropical purse seine fishery (20N-20S), by fleet category. (Refer to NOTES under TABLE 3 above 'Exempted Sets' refers to the footnote 3 exemption of CMM 2014-01; refer to Notes 11, 12, 13 and 14, and CMM 2017-01 (footnote 2) and CMM 2018-01, CMM 2020-01 CMM 2021-01 (footnote 1) refer to Notes 15 of Table 3).

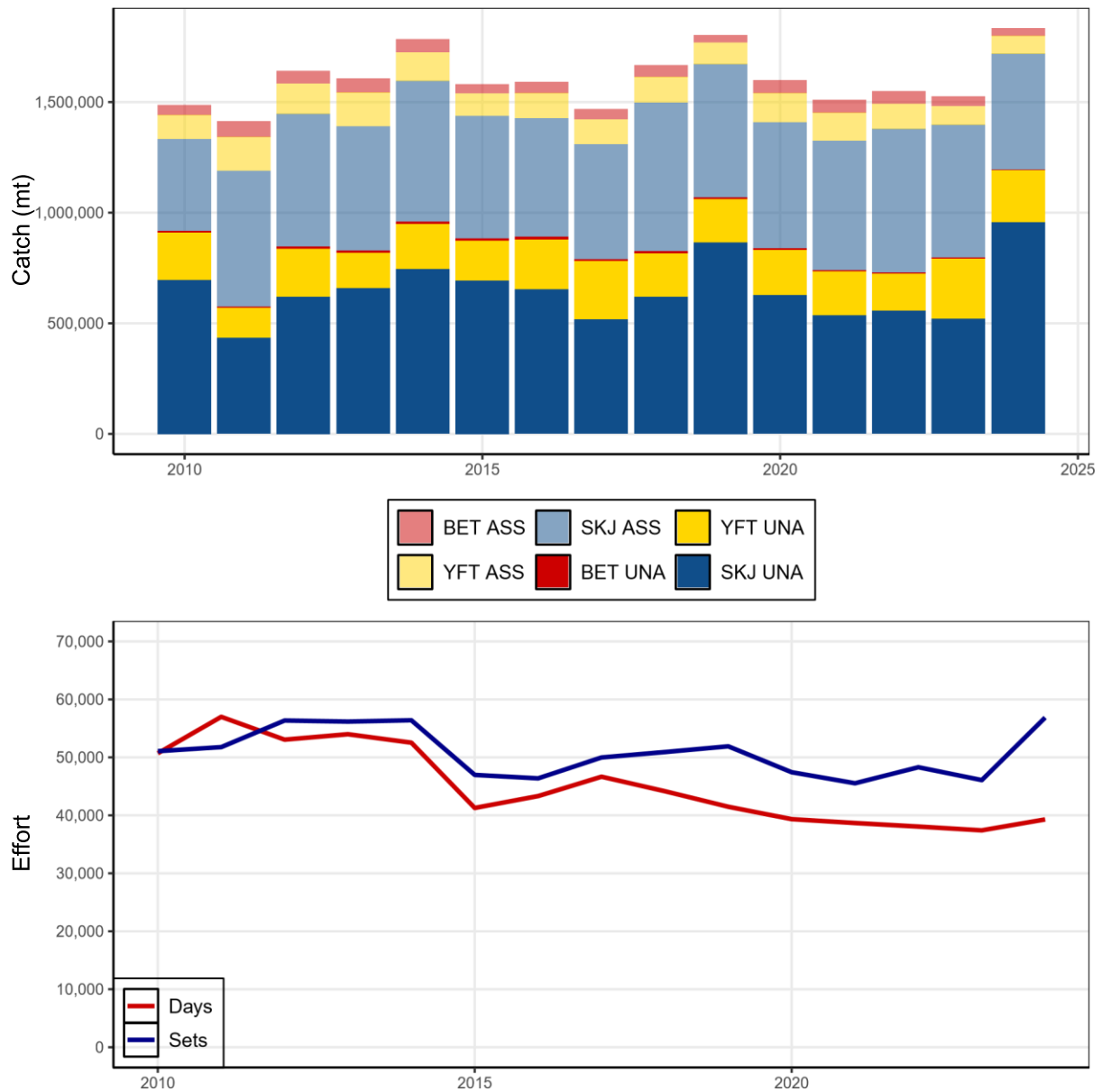


Figure 12: Purse seine tuna catch (top) and effort (bottom) by set type and species WCPFC Convention Area between 20N-20S, 2010–2024, excluding domestic purse seine catch/effort in Philippines, Indonesia and Vietnam. Includes domestic-based Philippines catch/effort in the HSP#1. (Refer to NOTES under TABLE 4 above)

Longline fishery information

Table 8: Reported longline catches metric tonnes of bigeye tuna in the WCPFC-CA, by flag

CCM	2001	2002	2003	2004	2005	2006	2007	2008	2009	2010	2011	2012	2013	2014	2015	2016	2017	2018	2019	2020	2021	2022	2023	2024	CMM limits for 2023	CMM limits for 2024	Notes
AMERICAN SAMOA	75	196	242	227	134	181	218	132	249	487	1,263	1,502	389	318	557	658	1,409	851	1,545	1,586	428	1,565	406	397			4
AUSTRALIA	1,307	1,002	1,024	892	791	499	1,008	1,027	726	458	379	553	489	490	785	825	418	325	258	290	361	342	225	276			7
BELIZE	1,322	812	782	297	425	254	158	89	43	89	102	132	217	0	0	0	0	0	0	0	0	0	0	0			8
CHINA	2,227	2,312	8,965	11,748	7,520	13,378	10,535	10,798	15,289	13,924	11,139	11,324	10,671	9,370	8,210	8,195	7,023	8,695	8,644	7,403	5,493	5,667	5,393	4,327	8724	8724	10,11,16
COOK ISLANDS	1	56	204	394	220	166	238	292	217	319	925	1,624	208	184	151	183	298	197	124	97	83	75	9	11			4
EU - PORTUGAL	0	0	0	0	0	0	0	0	0	0	3	17	106	71	17	10	0	0	0	0	0	0	0	0			
EU - SPAIN	0	0	0	42	17	62	62	77	46	15	10	23	23	65	53	53	21	39	30	40	105	112	192	70			7
FEDERATED STATES OF MICRONESIA	651	759	656	542	182	172	1,395	970	1,395	1,113	1,500	1,700	1,270	2,488	2,296	1,869	2,134	3,107	3,559	2,158	1,606	1,375	1,220	2,104			4
FUJI	662	853	889	1,254	721	771	556	671	768	539	1,718	1,588	1,018	1,698	1,184	1,396	1,108	891	1,182	736	482	426	579	543			4

FRENCH POLYNESIA	745	649	439	502	606	498	478	490	587	436	607	654	787	741	813	563	896	1,063	954	874	1,045	1,388	1,232	1,320			4
GUAM	0	0	0	0	0	0	0	0	0	0	0	0	0	0	831	932	0	0	0	0	0	0	0	0			
INDONESIA	845	812	828	1,090	2,285	2,750	2,155	3,395	4,067	1,937	2,325	3,399	2,118	3,380	3,606	8	0	1,255	2,190	1,129	1,243	1,489	279	375	5889	5889	12
JAPAN	27,466	29,574	26,110	29,248	23,021	25,685	26,076	20,942	17,653	16,619	17,722	16,917	12,991	15,564	14,316	11,467	11,471	12,005	10,639	8,862	8,305	6,561	7,535	8,816	17765	17765	16
KIRIBATI	0	0	1	0	0	0	0	44	0	3	155	800	582	268	556	603	287	423	1,292	1,570	625	2,707	4,993	3,026			4
MARSHALL ISLANDS	0	0	0	1	0	0	3	375	381	257	259	335	80	0	0	700	1,229	1,146	1,458	764	928	1,173	1,421	2,174			4
NAURU	6	3	10	0	0	0	0	0	0	0	0	0	0	0	0	0	0	0	0	0	0	0	0	0			4
NEW CALEDONIA	128	189	142	90	76	35	53	63	51	44	41	49	51	58	63	74	48	46	40	51	59	67	39	28			4
NEW ZEALAND	481	201	204	177	175	177	213	133	253	132	174	154	109	122	122	177	97	135	50	67	85	50	153	7			7
NIUE	0	0	0	0	10	22	35	51	10	4	0	0	0	0	0	0	0	0	0	0	0	0	0	0			4
NORTHERN MARIANA ISLANDS	0	0	0	0	0	0	0	0	0	0	0	0	492	1,000	1,000	879	999	993	999	926	1,500	544	1,205	0			4
PALAU	21	1	1	7	0	0	0	0	0	0	0	0	0	0	0	0	1,106	1,011	855	1	17	10	3	3			4
PAPUA NEW GUINEA	240	318	390	399	237	216	111	201	128	39	59	119	32	52	15	86	47	87	162	17	0	179	291	132			4

PHILIPPINES	59	59	59	59	59	59	59	59	59	59	777	248	167	63	0	0	0	0	0	0	0	0	0	0	0	0	0	0	0	0	0	0	0	0	0	0	0	0	0	0	0	0	0	0	0	0	0	0	0	0	0	0	0	0	0	0	0	0	0	0	0	0	0	0	0	0	0	0	0	0	0	0	0	0	0	0	0	0	0	0	0	0	0	0	0	0	0	0	0	0	0	0	0	0	0	0	0	0	0	0	0	0	0	0	0	0	0	0	0	0	0	0	0	0	0	0	0	0	0	0	0	0	0	0	0	0	0	0	0	0	0	0	0	0	0	0	0	0	0	0	0	0	0	0	0	0	0	0	0	0	0	0	0	0	0	0	0	0	0	0	0	0	0	0	0	0	0	0	0	0	0	0	0	0	0	0	0	0	0	0	0	0	0	0	0	0	0	0	0	0	0	0	0	0	0	0	0	0	0	0	0	0	0	0	0	0	0	0	0	0	0	0	0	0	0	0	0	0	0	0	0	0	0	0	0	0	0	0	0	0	0	0	0	0	0	0	0	0	0	0	0	0	0	0	0	0	0	0	0	0	0	0	0	0	0	0	0	0	0	0	0	0	0	0	0	0	0	0	0	0	0	0	0	0	0	0	0	0	0	0	0	0	0	0	0	0	0	0	0	0	0	0	0	0	0	0	0	0	0	0	0	0	0	0	0	0	0	0	0	0	0	0	0	0	0	0	0	0	0	0	0	0	0	0	0	0	0	0	0	0	0	0	0	0	0	0	0	0	0	0	0	0	0	0	0	0	0	0	0	0	0	0	0	0	0	0	0	0	0	0	0	0	0	0	0	0	0	0	0	0	0	0	0	0	0	0	0	0	0	0	0	0	0	0	0	0	0	0	0	0	0	0	0	0	0	0	0	0	0	0	0	0	0	0	0	0	0	0	0	0	0	0	0	0	0	0	0	0	0	0	0	0	0	0	0	0	0	0	0	0	0	0	0	0	0	0	0	0	0	0	0	0	0	0	0	0	0	0	0	0	0	0	0	0	0	0	0	0	0	0	0	0	0	0	0	0	0	0	0	0	0	0	0	0	0	0	0	0	0	0	0	0	0	0	0	0	0	0	0	0	0	0	0	0	0	0	0	0	0	0	0	0	0	0	0	0	0	0	0	0	0	0	0	0	0	0	0	0	0	0	0	0	0	0	0	0	0	0	0	0	0	0	0	0	0	0	0	0	0	0	0	0	0	0	0	0	0	0	0	0	0	0	0	0	0	0	0	0	0	0	0	0	0	0	0	0	0	0	0	0	0	0	0	0	0	0	0	0	0	0	0	0	0	0	0	0	0	0	0	0	0	0	0	0	0	0	0	0	0	0	0	0	0	0	0	0	0	0	0	0	0	0	0	0	0	0	0	0	0	0	0	0	0	0	0	0	0	0	0	0	0	0	0	0	0	0	0	0	0	0	0	0	0	0	0	0	0	0	0	0	0	0	0	0	0	0	0	0	0	0	0	0	0	0	0	0	0	0	0	0	0	0	0	0	0	0	0	0	0	0	0	0	0	0	0	0	0	0	0	0	0	0	0	0	0	0	0	0	0	0	0	0	0	0	0	0	0	0	0	0	0	0	0	0	0	0	0	0	0	0	0	0	0	0	0	0	0	0	0	0	0	0	0	0	0	0	0	0	0	0	0	0	0	0	0	0	0	0	0	0	0	0	0	0	0	0	0	0	0	0	0	0	0	0	0	0	0	0	0	0	0	0	0	0	0	0	0	0	0	0	0	0	0	0	0	0	0	0	0	0	0	0	0	0	0	0	0	0	0	0	0	0	0	0	0	0	0	0	0	0	0	0	0	0	0	0	0	0	0	0	0	0	0	0	0	0	0	0	0	0	0	0	0	0	0	0	0	0	0	0	0	0	0	0	0	0	0	0	0	0	0	0	0	0	0	0	0	0	0	0	0	0	0	0	0	0	0	0	0	0	0	0	0	0	0	0	0	0	0	0	0	0	0	0	0	0	0	0	0	0	0	0	0	0	0	0	0	0	0	0	0	0	0	0	0	0	0	0	0	0	0	0	0	0	0	0	0	0	0	0	0	0	0	0	0	0	0	0	0	0	0	0	0	0	0	0	0	0	0	0	0	0	0	0	0	0	0	0	0	0	0	0	0	0	0	0	0	0	0	0	0	0	0	0	0	0	0	0	0	0	0	0	0	0	0	0	0	0	0	0	0	0	0	0	0	0	0	0	0	0	0	0	0	0	0	0	0	0	0	0	0	0	0	0	0	0	0	0	0	0	0	0	0	0	0	0	0	0	0	0	0	0	0	0	0	0	0	0	0	0	0	0	0	0	0	0	0	0	0	0	0	0	0	0	0	0	0	0	0	0	0	0	0	0	0	0	0	0	0	0	0	0	0	0	0	0	0	0	0	0	0	0	0	0	0	0	0	0	0	0	0	0	0	0	0	0	0	0	0	0	0	0	0	0	0	0	0	0	0	0	0	0	0	0	0	0	0	0	0	0	0	0	0	0	0	0	0	0	0	0	0	0	0	0	0	0	0	0	0	0	0	0	0	0	0	0	0	0	0	0	0	0	0	0	0	0	0	0	0	0	0	0	0	0	0	0	0	0	0	0	0	0	0	0	0	0	0	0	0	0	0	0	0	0	0	0	0	0	0	0	0	0	0	0	0	0	0	0	0	0	0	0	0	0	0	0	0	0	0	0	0	0	0	0	0	0	0	0	0	0	0	0	0	0	0	0	0	0	0	0	0	0	0	0	0	0	0	0	0	0	0	0	0	0	0	0	0	0	0	0	0	0	0	0	0	0	0	0	0	0	0	0	0</
-------------	----	----	----	----	----	----	----	----	----	----	-----	-----	-----	----	---	---	---	---	---	---	---	---	---	---	---	---	---	---	---	---	---	---	---	---	---	---	---	---	---	---	---	---	---	---	---	---	---	---	---	---	---	---	---	---	---	---	---	---	---	---	---	---	---	---	---	---	---	---	---	---	---	---	---	---	---	---	---	---	---	---	---	---	---	---	---	---	---	---	---	---	---	---	---	---	---	---	---	---	---	---	---	---	---	---	---	---	---	---	---	---	---	---	---	---	---	---	---	---	---	---	---	---	---	---	---	---	---	---	---	---	---	---	---	---	---	---	---	---	---	---	---	---	---	---	---	---	---	---	---	---	---	---	---	---	---	---	---	---	---	---	---	---	---	---	---	---	---	---	---	---	---	---	---	---	---	---	---	---	---	---	---	---	---	---	---	---	---	---	---	---	---	---	---	---	---	---	---	---	---	---	---	---	---	---	---	---	---	---	---	---	---	---	---	---	---	---	---	---	---	---	---	---	---	---	---	---	---	---	---	---	---	---	---	---	---	---	---	---	---	---	---	---	---	---	---	---	---	---	---	---	---	---	---	---	---	---	---	---	---	---	---	---	---	---	---	---	---	---	---	---	---	---	---	---	---	---	---	---	---	---	---	---	---	---	---	---	---	---	---	---	---	---	---	---	---	---	---	---	---	---	---	---	---	---	---	---	---	---	---	---	---	---	---	---	---	---	---	---	---	---	---	---	---	---	---	---	---	---	---	---	---	---	---	---	---	---	---	---	---	---	---	---	---	---	---	---	---	---	---	---	---	---	---	---	---	---	---	---	---	---	---	---	---	---	---	---	---	---	---	---	---	---	---	---	---	---	---	---	---	---	---	---	---	---	---	---	---	---	---	---	---	---	---	---	---	---	---	---	---	---	---	---	---	---	---	---	---	---	---	---	---	---	---	---	---	---	---	---	---	---	---	---	---	---	---	---	---	---	---	---	---	---	---	---	---	---	---	---	---	---	---	---	---	---	---	---	---	---	---	---	---	---	---	---	---	---	---	---	---	---	---	---	---	---	---	---	---	---	---	---	---	---	---	---	---	---	---	---	---	---	---	---	---	---	---	---	---	---	---	---	---	---	---	---	---	---	---	---	---	---	---	---	---	---	---	---	---	---	---	---	---	---	---	---	---	---	---	---	---	---	---	---	---	---	---	---	---	---	---	---	---	---	---	---	---	---	---	---	---	---	---	---	---	---	---	---	---	---	---	---	---	---	---	---	---	---	---	---	---	---	---	---	---	---	---	---	---	---	---	---	---	---	---	---	---	---	---	---	---	---	---	---	---	---	---	---	---	---	---	---	---	---	---	---	---	---	---	---	---	---	---	---	---	---	---	---	---	---	---	---	---	---	---	---	---	---	---	---	---	---	---	---	---	---	---	---	---	---	---	---	---	---	---	---	---	---	---	---	---	---	---	---	---	---	---	---	---	---	---	---	---	---	---	---	---	---	---	---	---	---	---	---	---	---	---	---	---	---	---	---	---	---	---	---	---	---	---	---	---	---	---	---	---	---	---	---	---	---	---	---	---	---	---	---	---	---	---	---	---	---	---	---	---	---	---	---	---	---	---	---	---	---	---	---	---	---	---	---	---	---	---	---	---	---	---	---	---	---	---	---	---	---	---	---	---	---	---	---	---	---	---	---	---	---	---	---	---	---	---	---	---	---	---	---	---	---	---	---	---	---	---	---	---	---	---	---	---	---	---	---	---	---	---	---	---	---	---	---	---	---	---	---	---	---	---	---	---	---	---	---	---	---	---	---	---	---	---	---	---	---	---	---	---	---	---	---	---	---	---	---	---	---	---	---	---	---	---	---	---	---	---	---	---	---	---	---	---	---	---	---	---	---	---	---	---	---	---	---	---	---	---	---	---	---	---	---	---	---	---	---	---	---	---	---	---	---	---	---	---	---	---	---	---	---	---	---	---	---	---	---	---	---	---	---	---	---	---	---	---	---	---	---	---	---	---	---	---	---	---	---	---	---	---	---	---	---	---	---	---	---	---	---	---	---	---	---	---	---	---	---	---	---	---	---	---	---	---	---	---	---	---	---	---	---	---	---	---	---	---	---	---	---	---	---	---	---	---	---	---	---	---	---	---	---	---	---	---	---	---	---	---	---	---	---	---	---	---	---	---	---	---	---	---	---	---	---	---	---	---	---	---	---	---	---	---	---	---	---	---	---	---	---	---	---	---	---	---	---	---	---	---	---	---	---	---	---	---	---	---	---	---	---	---	---	---	---	---	---	---	---	---	---	---	---	---	---	---	---	---	---	---	---	---	---	---	---	---	---	---	---	---	---	---	---	---	---	---	---	---	---	---	---	---	---	---	---	---	---	---	---	---	---	---	---	---	---	---	---	---	---	---	---	---	---	---	---	---	---	---	---	---	---	---	---	---	---	---	---	---	---	---	---	---	---	---	---	---	---	---	---	---	---	---	---	---	---	---	---	---	---	---	---	---	---	---	---	---	---	---	---	---	---	---	---	---	---	---	---	---	---	---	---	---	---	---	---	---	---	---	---	---	---	---	---	---	---	---	---	---	---	---	---	---	---	---	---	---	---	---	---	---	---	---	---	---	---	---	---	---	---	---	---	---	---	---	---	---	---	---	---	---	---	---	---	---	---	---	---	---	---	---	---	---	---	---	---	---	---	---	---	---	---	---	---	---	---	---	---	---	---	---	---	---	---	---	---	---	---	---	---	---	---	---	---	---	---	---	---	---	---	---	---	---	---	---	---	---	---	---	---	---	---	---	---	---	---	---	---	---	---	---	---	---	---	---	---	---	---	---	---	---	---	-----

Notes:

1. Source: WCPFC Annual catch estimates as at 31 October 2025.
2. Catch estimates in red have been carried over from previous years.
3. Indonesia and Philippines may revise estimates for previous years.
4. The limits in the columns labelled 'CMM limits for 2023' and 'CMM limits for 2024' do not apply to small island developing State members and participating Territories according to paragraph 7 of CMM 2014-01 and CMM 2015-01 (or its replacement CMM).
5. Catches and effort of vessels operating under charters and similar arrangements have been attributed to host island states or territories in accordance with paragraph 5 of CMM 2012-01 and paragraph 5 CMM 2013-01, paragraph 5 of CMM 2013-01, paragraph 5 of CMM 2014-01, paragraph 5 of CMM 2015-01, paragraph 7 of CMM 2016-01 (or its replacement CMM) using the best information available to SPC-OFP. However, in several cases, catches have not yet been attributed to the CCM responsible for the "charter or similar arrangements" since the flag state CCM has yet to advise that it has excluded these catches from their data (and thereby avoid double-counting).
6. Estimates include archipelagic water catches which for some countries cannot be separated at this stage.
7. The catch limits established at 2,000 mt prior to 2010, remain at the level of 2,000 mt for relevant WCPFC members. (according to CMM 2008-01 Para. 32, CMM 2012-01 para 26 and CMM 2013-01 para 41 and its replacement CMM, including CMM 2017-01). Note although EU fleets are reported here separately by flag, it is understood that as per the relevant CMM the 2000 mt limit applies to the combined EU-longline fleet.
8. Subject to CNM on participatory rights, in accordance with paragraph 6 of CMM 2014-01 and CMM 2015-01 (or its replacement CMM) for years from 2015 onwards.
9. The Vietnam longline fleet are understood to fish outside the WCPFC Convention Area (South China Sea).
10. Catches by the Chinese longline fleet in the Kiribati EEZ are included in the estimates.
11. Catches by chartered Chinese, Fijian and Chinese-Taipei flagged longline vessels licensed to fish in Solomon Islands waters have been attributed to the Solomon Islands according to the respective WCPFC Charter notifications.
12. Indonesia bigeye tuna catch excludes catches in archipelagic waters.
13. USA revised limit for 2015 was 3504 mt, to take into account the overage in bigeye catch from 2014
14. 'CMM limits for 2023' is according to Table 3 in CMM 2021-01, and refer to catch limits for 2023 only, and 'CMM limits for 2024' is according to Table 3 in CMM 2023-01 with adjustments that reflect the footnotes to Table 3.
15. USA advised by letter to the WCPFC Secretariat that they reduced their 2017 bigeye catch limit (of 3,345 mt in Att F of CMM 2016-01) to 3,138 mt to offset the overage in 2016.
16. CMM 2017-01 Table 3, CMM 2018-01, CMM 2020-01, CMM 2021-01, CMM 2023-01 Attachment 1 Table 3, includes this note: Japan will make an annual one-off transfer of 500 metric tonnes of its bigeye tuna catch limit to China.
17. In accordance with the deletion of paragraph 9 of CMM 2021 01, catch and effort of U.S. flagged Hawaii based longline vessels will no longer be attributed to US Participating Territories, future attribution for the US territories shall remain separate.

Table 9: Reported longline catches (metric tonnes) of yellowfin tuna in the WCPFC-CA, by flag

CCM	2001	2002	2003	2004	2005	2006	2007	2008	2009	2010	2011	2012	2013	2014	2015	2016	2017	2018	2019	2020	2021	2022	2023	2024	2001-2004 avg	Notes
AMERICAN SAMOA	188	485	497	888	526	513	640	333	398	473	699	620	422	454	360	561	871	470	409	383	521	332	418	451	515	4
AUSTRALIA	2,819	3,531	3,681	2,356	1,499	1,830	1,390	1,650	1,387	1,359	1,858	1,259	1,341	1,685	2,177	1,734	1,666	1,312	1,951	1,749	1,449	1,454	1,615	2,841	3097	
BELIZE	957	720	943	208	298	106	273	129	121	28	13	30	21	0	0	0	0	0	0	0	0	0	0	0	707	6
CHINA	1,919	1,844	3,358	4,048	2,446	4,055	2,768	5,007	7,958	2,576	4,598	6,004	4,638	5,949	6,226	6,559	8,526	9,031	10,010	10,115	9,530	9,560	14,248	18,253	2792	9,10
COOK ISLANDS	1	42	178	506	413	262	290	247	197	192	394	693	346	504	339	315	610	532	403	362	309	209	31	27	182	4
EU - PORTUGAL	0	0	0	0	0	0	0	0	0	0	0	0	2	22	4	6	0	0	0	0	0	0	0	0	0	0
EU - SPAIN	0	0	0	23	1	127	127	10	7	3	0	2	2	11	10	28	7	13	20	33	40	42	72	40	6	13
FEDERATED STATES OF MICRONESIA	338	164	276	185	99	270	548	328	583	515	750	750	850	1,639	1,691	1,771	1,416	2,395	4,692	2,010	1,729	1,915	993	2,950	241	4
FIJI	2,082	2,027	2,482	4,164	2,591	2,231	1,721	2,763	3,440	2,602	4,051	3,188	2,203	4,343	3,647	4,701	4,986	2,738	3,833	4,564	2,662	2,127	2,043	3,472	2689	4
FRENCH POLYNESIA	967	507	621	1,066	793	690	527	447	716	418	491	758	615	783	1,093	968	1,434	1,314	1,364	1,135	2,350	1,373	1,480	1,640	790	4
INDONESIA	3,758	3,612	3,684	4,851	10,679	9,743	10,209	12,873	18,154	13,325	13,124	11,938	9,012	13,353	18,604	5,632	120	7,707	4,382	427	682	1,131	1,289	788	7192	12
JAPAN	18,096	15,810	16,803	15,209	14,792	13,462	13,725	12,365	14,039	17,466	11,427	10,621	8,268	6,494	8,683	10,166	10,099	10,109	10,940	6,070	7,853	8,289	7,252	11,399	16480	
KIRIBATI	2	0	2	0	0	0	0	7	0	4	140	300	175	108	405	610	359	220	862	1,279	904	2,535	2,754	5,021	1	4
MARSHALL ISLANDS	0	0	0	3	0	0	2	91	120	117	99	113	47	0	0	578	948	707	1,175	743	634	964	669	1,861	1	4
NAURU	5	2	6	1	0	0	0	0	0	0	0	0	0	0	0	0	0	0	0	0	0	0	0	0	4	4
NEW CALEDONIA	570	572	754	631	448	414	393	424	487	505	585	573	531	741	852	482	559	467	678	512	624	588	426	730	632	4
NEW ZEALAND	131	27	39	36	36	3	25	11	3	6	3	1	1	2	2	55	10	20	5	10	22	7	36	12	58	
NIUE	0	0	0	0	34	42	43	40	20	8	0	0	0	0	0	0	0	0	0	0	0	0	0	0	0	4
NORTHERN MARIANA ISLANDS	0	0	0	0	0	0	0	0	0	0	0	0	93	0	0	0	0	0	0	0	0	0	0	0	0	4
PALAU	41	3	19	28	0	0	0	0	0	0	0	0	0	0	0	0	1,352	1,887	1,644	0	16	14	5	5	23	4
PAPUA NEW GUINEA	1,812	1,738	1,747	2,318	1,222	2,139	1,539	2,259	2,714	2,147	2,303	2,961	1,041	1,568	891	728	1,249	2,070	1,479	116	0	1,779	1,229	23	1904	4
PHILIPPINES	484	484	484	484	484	484	484	484	484	484	146	61	27	153	0	0	0	0	0	0	0	0	0	0	484	5
REPUBLIC OF KOREA	13,768	15,497	12,134	10,058	13,329	9,529	8,817	7,846	10,032	7,644	7,881	7,832	5,716	8,371	9,352	8,054	7,008	6,519	13,847	10,948	10,340	11,516	10,110	16,271	12864	

SAMOA	470	369	293	444	199	264	305	317	412	386	395	234	330	231	252	244	644	401	547	642	384	370	546	126	394	4
SENEGAL	0	0	0	0	6	3	4	0	0	0	0	0	0	0	0	0	0	0	0	0	0	0	0	0	0	7
SOLOMON ISLANDS	159	401	258	440	6	0	0	0	0	5,159	643	0	0	12,536	15,923	2,130	0	4,451	5,094	2,732	3,288	5,470	5,206	3,701	315	4,10
CHINESE TAIPEI	22,326	21,993	22,149	22,975	19,571	18,654	16,668	16,411	19,693	22,225	21,320	16,948	14,999	12,257	14,118	17,816	22,956	16,050	17,724	10,212	11,306	15,469	11,939	13,856	22361	10
TONGA	259	263	263	163	219	227	341	291	109	47	171	140	126	195	297	325	373	201	186	156	208	215	165	131	237	4
TUVALU	0	0	0	0	0	0	0	0	0	286	453	114	41	166	124	164	106	76	16	9	0	0	0	0	0	4
USA	1,016	572	809	694	698	937	833	836	429	462	738	576	546	567	681	1,093	1,750	1,868	1,556	1,197	2,029	1,969	2,329	3,704	773	
VANUATU	78	778	1,315	1,762	1,147	1,368	1,049	878	817	939	1,601	2,230	1,768	1,695	2,700	1,740	1,437	1,269	1,325	849	901	578	529	1,308	983	4
WALLIS AND FUTUNA	0	0	0	0	0	0	0	0	0	0	4	0	0	0	0	0	0	0	0	0	0	0	0	0	0	4
TOTAL	72,246	71,441	72,795	73,541	71,536	67,353	62,721	66,047	82,320	79,090	73,720	68,285	53,234	73,702	88,473	66,420	68,544	71,857	84,202	56,260	57,790	67,906	65,384	88,610		
VIETNAM	8,292	9,756	8,179	11,122	10,895	10,930	11,270	10,375	9,244	9,513	10,576	12,456	13,917	11,603	15,097	16,423	15,677	16,500	14,653	14,118	13,822	13,051	18,054	1		

Notes:

1. Source: WCPFC Annual catch estimates as at 31 October 2025.
2. Catch estimates in red have been carried over from previous years.
3. Indonesia and Philippines may revise their estimates for recent years through their annual catch estimates review processes. (see the respective Annual Catch Estimate Workshop reports at <http://www.wcpfc.int/westpacific-east-asia-oceanic-fisheries-management-project>)
4. Catches and effort of vessels operating under charters and similar arrangements have been attributed to host island states or territories in accordance with paragraph 2 of CMM 2008-01 (paragraph 5 of CMM 2012-01, paragraph 5 of CMM 2013-01 or its replacement CMM) using the best information available to SPC-OFP. However, in several cases, catches have not yet been attributed to the CCM responsible for the “charter or similar arrangements” since the flag state CCM has yet to advise that it has excluded these catches from their data (and thereby avoid double-counting).
5. Estimates include archipelagic water catches which for some countries cannot be separated at this stage.
6. Subject to CNM on participatory rights, in accordance with paragraph 6 of CMM 2014-01 (or its replacement CMM) for years from 2015 onwards. Belize is not presently a CNM.
7. Senegal committed to limiting its fishing activities in the WCPF Convention Area to one longline vessel WCPFC5 Report (Para. 44). Senegal is not presently a CNM.
8. The Vietnam longline fleet are understood to fish outside the WCPFC Convention Area (South China Sea).
9. Catches by the Chinese longline fleet in the Kiribati EEZ are included in the estimates.
10. Catches by chartered Chinese and Chinese-Taipei flagged longline vessels licensed to fish in Solomon Islands waters have been attributed to the Solomon Islands according to the respective WCPFC Charter notifications. 11. Does not yet cover development of new fisheries in the waters of small-island developing states (e.g. Tokelau)
12. Indonesia yellowfin tuna catch excludes catches in archipelagic waters.
13. Note although EU fleets are reported here separately by flag, it is understood that as per the relevant CMM applicable limits apply to the combined EU-longline fleet.

Table 10: Longline effort (100s of hooks) in the tropical WCPFC LONGLINE fishery (20N-10S), by fleet

Fleet	2010	2011	2012	2013	2014	2015	2016	2017	2018	2019	2020	2021	2022	2023	2024
CK	13,419	16,804	32,820	16,869	10,880	11,761	25,750	20,672	21,581	19,477	18,625	14,164	10,763	580	1,718
CN	558,006	741,473	845,647	660,522	555,229	861,304	644,920	492,189	815,577	625,226	574,100	502,077	419,816	242,938	532,027
ES	0	0	0	0	0	0	0	0	0	0	0	993	657	0	0
FJ	28,007	91,427	167,925	135,964	129,710	83,827	84,674	45,609	30,099	73,636	43,686	18,017	17,316	8,450	20,750
FM 84,856	94,585	110,622	85,577	123,969	149,576	165,616	167,453	361,895	328,346	259,081	186,211	130,245	107,235	175,125	JP 746,851 666,878 616,244 567,853 520,140 493,290 419,876 424,147 475,237 423,041
276,600	240,300	243,593	289,923	344,356	KI 0	19,590	50,227	27,577	23,868	38,272	55,215	45,625	40,555	73,580	69,114 79,118 174,672 191,663 246,304 KR 728,923 803,711 771,118 626,901 599,181 506,812 587,473
473,750	568,150	591,577	608,630	586,804	563,467	489,349	468,430	MH 16,884	16,819	20,692	6,286	0	584	63,153	138,811 104,151 95,914 75,315 73,289 92,628 116,992 120,668
PF	0	242	147	245	437	18	1,138	13,324	5,180	3,656	1,424	11,084	11,381	4,899	10,418
PG	24,590	51,649	40,194	15,029	19,576	7,883	4,494	2,789	35,335	35,315	2,473	0	31,370	51,503	2,637
PW	0	0	0	0	0	0	626	87,976	109,744	92,157	1,985	0	208	526	0
SB	14,795	12,759	5,497	3,942	254,915	306,150	24,030	18,036	209,676	205,195	92,378	112,062	120,527	134,873	113,078
TV	3,436	26,925	69,185	16,219	16,809	18,844	12,927	15,814	12,347	8,011	1,305	1,616	30	0	0
TW 1,406,854	1,834,744	1,900,809	1,338,882	1,201,741	1,340,426	1,398,400	1,565,545	1,189,696	1,245,275	838,355	906,610	1,079,530	921,894	963,098	US 179,639 234,435 253,609 235,961 274,547 328,146 354,846
335,033	313,180	469,526	449,857	529,064	585,356	527,142	477,393	VU 79,757	93,553	135,225	196,863	141,431	307,536	212,820	139,413 121,786 120,250 77,181 46,920 85,611 67,701 60,545
TOTAL	3,886,017	4,705,594	5,019,961	3,934,690	3,872,433	4,454,429	4,055,958	3,986,186	4,414,189	4,410,182	3,390,109	3,308,329	3,567,170	3,155,668	3,536,547

Notes:

1. Estimates are based on available aggregate data for the WCPFC Area, 20N-10S.
2. Estimates exclude domestic longline effort for Philippines, Indonesia and Vietnam fleets.
3. Excluding vessels targeting South Pacific albacore is not possible at this stage for a number of reasons – the main reason being the lack of operational data. In the absence of complete operational data (which would include targeting information), the area 20N-10S has been selected as the area which best minimises both

South and North Pacific albacore targeting.

Fleet codes

- CK - Cook Islands
- CN - China
- FJ - Fiji
- FM - FSM
- JP - Japan
- KI - Kiribati
- KR - Republic of Korea
- MH - Marshall Islands
- PF - French Polynesia
- PG - PNG
- PW - Palau
- SB - Solomon Is.
- TV - Tuvalu
- TW - Chinese Taipei
- US - USA
- VU - Vanuatu

Notes:

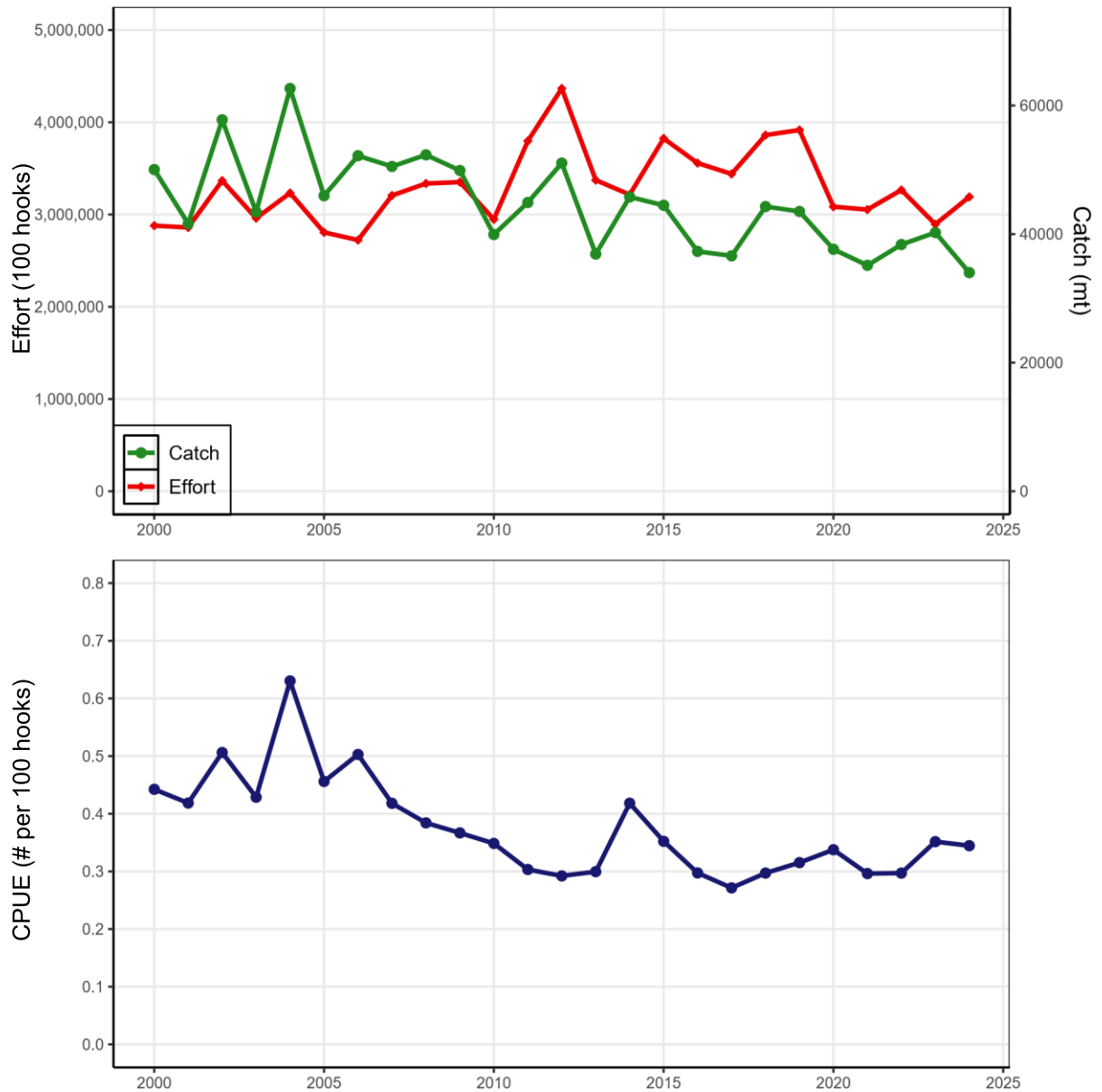


Figure 13: Estimates of effort, bigeye catch and nominal CPUE for the CORE tropical WCPFC longline fishery CORE Area is (130E - 150W, 20N - 10S); excludes Indonesia and Vietnam domestic fisheries where effort is not available. 2024 data are provisional.

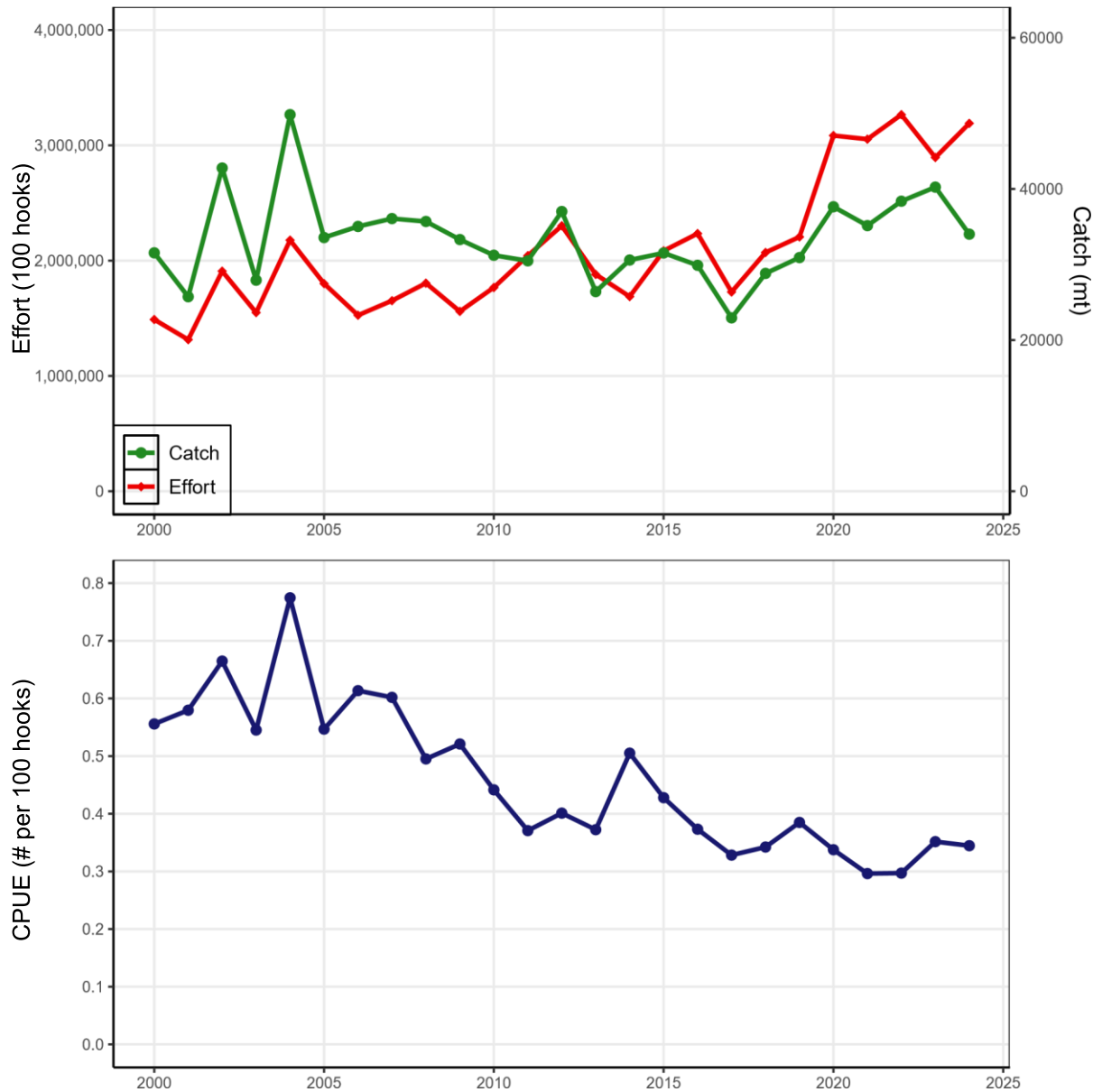


Figure 14: Estimates of effort and bigeye catch and CPUE for the Eastern tropical region of the WCPFC (170E - 150W, 20N - 10S); excludes Indonesia and Vietnam domestic fisheries where effort is not available. 2024 data are provisional.

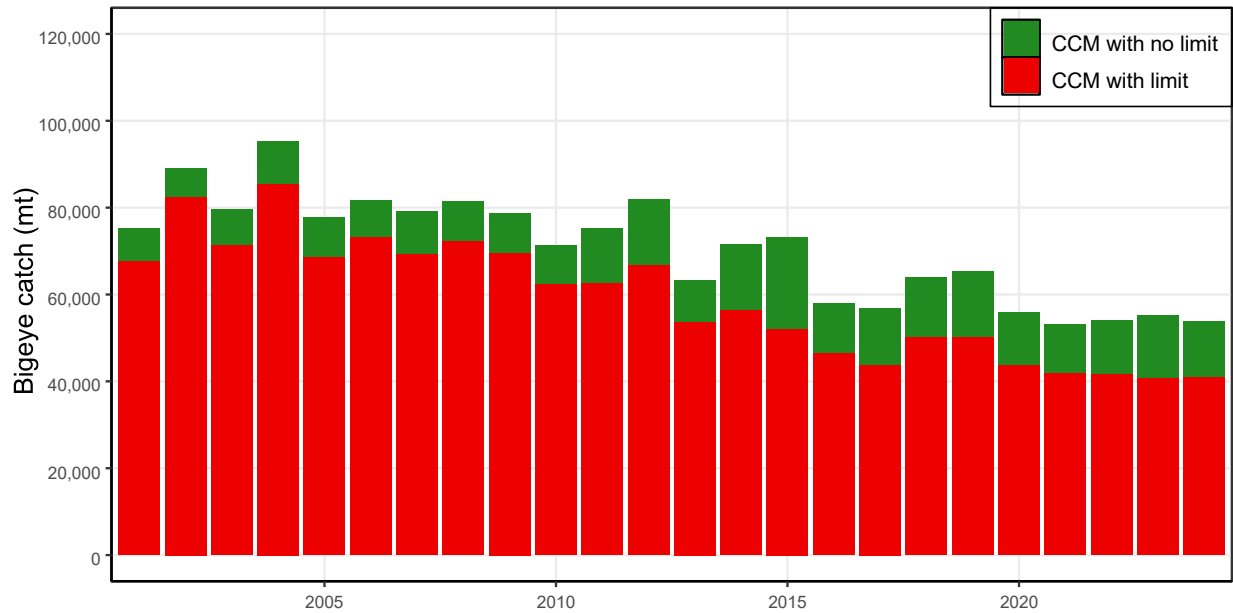


Figure 15: Reported longline catches (metric tonnes) of bigeye tuna in the WCPFC-CA, by fleet category. Refer to NOTES under TABLE 6 above for additional detail. Vietnam catch is included in ‘CCMs with no limits’)

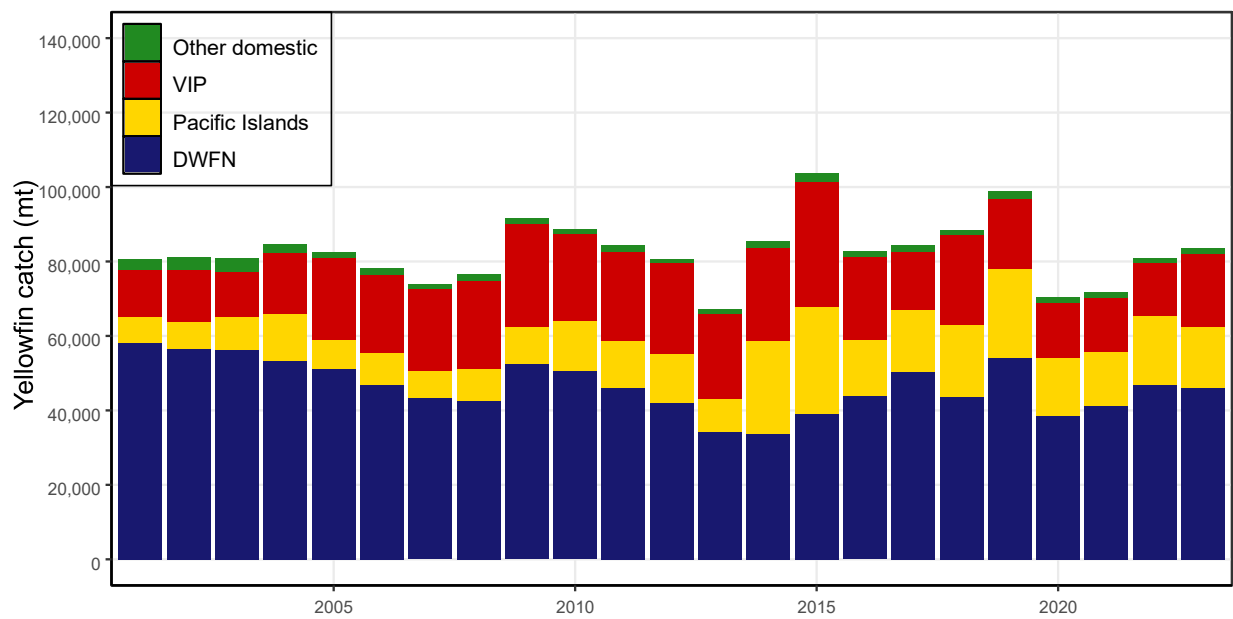


Figure 16: Reported longline catches (metric tonnes) of yellowfin tuna in the WCPFC-CA, by fleet category. Refer to NOTES under TABLE 7 above for additional detail; Vietnam catch is included.

VIP = Vietnam, Indonesia, Philippines

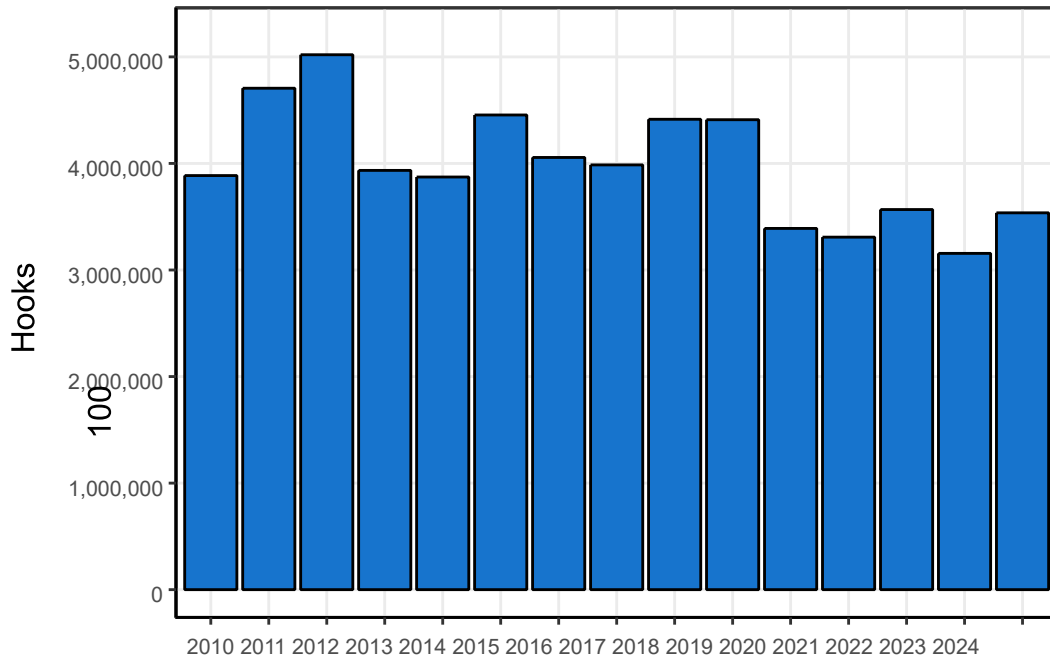


Figure 17: Longline effort (100s of hooks) in the tropical WCPFC LONGLINE fishery (20N-10S), 2010-2024

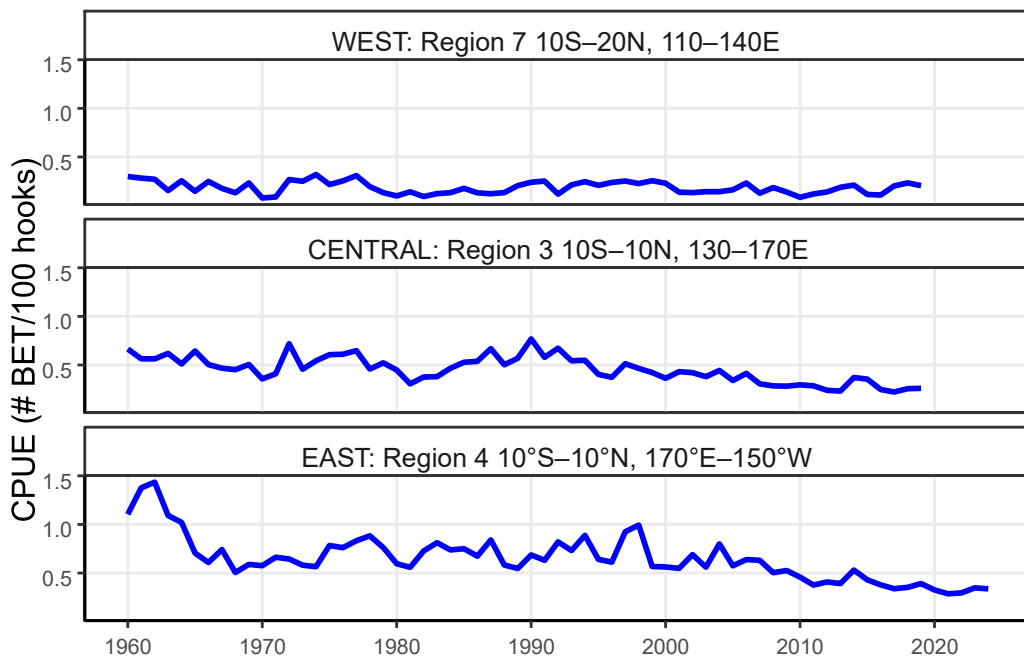


Figure 18: Annual trends in nominal bigeye tuna CPUE (# of bigeye per 100 hooks) in the tropical WCPFC LONGLINE fishery (20N-10S). Assessment region and spatial extent noted for each region.

Pole-and-line

Table 11: Skipjack catches from pole-and-line since 2016, by EEZ, excluding archipelagic waters

EEZ	2016	2017	2018	2019	2020	2021	2022	2023	2024
AU	0	0	0	0	0	22	0	0	0
CN	0	0	0	0	0	4	0	0	0
FM	5,588	318	1,257	2,298	19	1,746	3,298	601	6,994
GL	0	0	0	6	97	4	0	0	0
GU	0	0	0	0	0	1	0	0	91
I1	0	0	0	1	2	8	2	0	0
I2	235	285	0	209	53	204	4	0	0
I3	8,799	3,206	9,526	6,587	2,419	291	3,999	4,294	2,331
I4	0	0	0	164	276	2,379	3	0	355
I6	28,980	31,893	23,886	33,660	20,767	32,957	14,070	15,282	29,440
I7	423	394	151	311	294	723	500	0	0
ID	8,027	8,374	35,685	1,113	1,639	7,232	5,950	5,534	599
JP	24,969	25,928	41,808	25,173	8,891	25,653	15,737	27,727	26,564
KR	0	0	0	0	0	2	5	3	10
MH	620	597	2,531	4,334	3,086	1,009	660	1,277	69
MN	0	0	0	0	2,748	2,252	1,916	4,703	104
MP	0	0	0	0	10	20	61	219	98
PF	126	172	90	71	49	52	93	97	0
PG	0	0	0	0	0	3	0	0	0
PW	0	0	0	0	0	8	0	0	26
SB	759	80	92	81	86	44	187	98	0
TV	5	3	0	3,555	854	188	0	0	0
WK	0	0	0	0	0	1	0	0	2
X3	0	0	0	0	133	291	111	75	115
X5	0	0	0	0	1	0	0	0	0
TOTAL	78,531	71,250	115,026	77,563	41,424	75,094	46,596	59,910	66,798

Table 12: Skipjack catches (mt) from pole-and-line in archipelagic waters since 2016, by national jurisdiction

EEZ	2016	2017	2018	2019	2020	2021	2022	2023	2024
ID	77,497	51,441	68,056	79,795	106,447	71,170	64,348	34,283	24,761
PG	0	0	0	0	1	0	0	0	0
SB	574	774	854	868	907	966	1,037	422	0
TOTAL	78,071	52,215	68,910	80,663	107,355	72,136	65,385	34,705	24,761

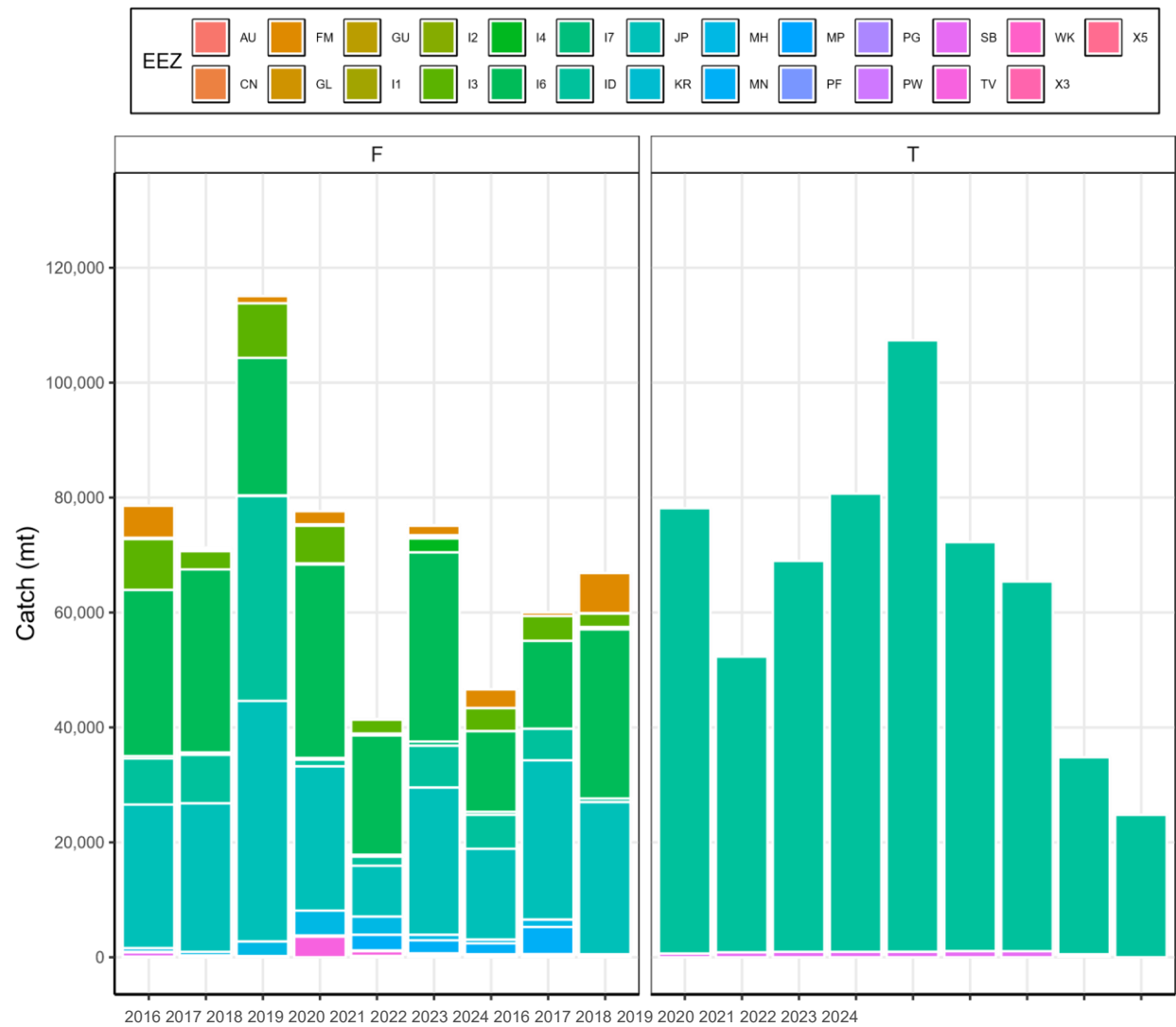


Figure 19: Pole-and-line catches of skipjack tuna by EEZ, and archipelagic waters (F = false; T = true)

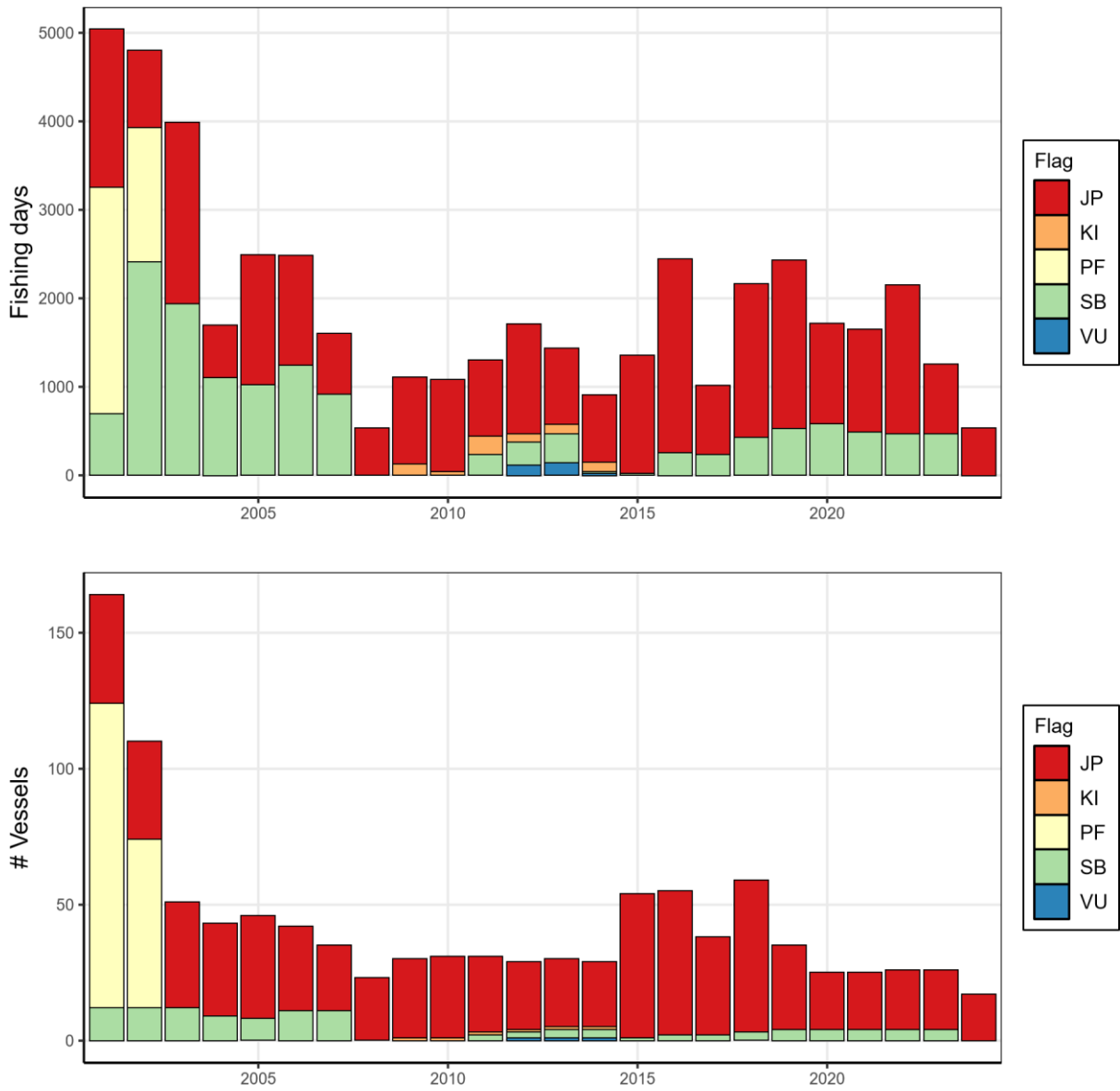


Figure 20: Pole-and-line fishing effort in days and number of vessels from 2000-2024, excluding Indonesia

Table 13: Tropical (20N-20S) pole-and-line fishing effort (days) in the WCPFC Convention Area from 2000-2024, by flag, excluding Indonesia

CCM	2001	2002	2003	2004	2005	2006	2007	2008	2009	2010	2011	2012	2013	2014	2015	2016	2017	2018	2019	2020	2021	2022	2023	2024
JP	1,788	881	2,053	595	1,468	1,245	686	530	981	1,043	865	1,238	861	761	1,334	2,191	777	1,736	1,903	1,137	1,161	1,684	789	536
KI	0	0	0	0	0	0	0	0	125	40	208	97	110	103	0	0	0	0	0	0	0	0	0	0
PF	2,561	1,516	0	0	0	0	0	0	0	0	0	0	0	0	0	0	0	0	0	0	0	0	0	0
SB	690	2,407	1,933	1,103	1,019	1,238	913	0	0	0	231	258	328	19	19	254	235	427	524	579	486	466	466	0
VU	0	0	0	0	0	0	0	0	0	0	0	114	136	21	0	0	0	0	0	0	0	0	0	0
TOTAL	5,039	4,804	3,986	1,698	2,487	2,483	1,599	530	1,106	1,083	1,304	1,707	1,435	904	1,353	2,445	1,012	2,163	2,427	1,716	1,647	2,150	1,255	536

Table 14: Number of pole-and-line fishing vessels in the WCPFC Convention Area (20N-20S) from 2000-2024, by flag, excluding Indonesia

CCM	2001	2002	2003	2004	2005	2006	2007	2008	2009	2010	2011	2012	2013	2014	2015	2016	2017	2018	2019	2020	2021	2022	2023	2024
JP	40	36	39	34	38	31	24	23	29	30	28	25	25	24	53	53	36	56	31	21	21	22	22	17
KI	0	0	0	0	0	0	0	0	1	1	1	1	1	1	0	0	0	0	0	0	0	0	0	0
PF	112	62	0	0	0	0	0	0	0	0	0	0	0	0	0	0	0	0	0	0	0	0	0	0
SB	12	12	12	9	8	11	11	0	0	0	2	2	3	3	1	2	2	3	4	4	4	4	4	0
VU	0	0	0	0	0	0	0	0	0	0	0	1	1	1	0	0	0	0	0	0	0	0	0	0
TOTAL	164	110	51	43	46	42	35	23	30	31	31	29	30	29	54	55	38	59	35	25	25	26	26	17

Archipelagic catches

Table 15: Skipjack catches (mt) from archipelagic waters, by national jurisdiction (all gears combined, excluding purse seine)

EEZ	2016	2017	2018	2019	2020	2021	2022	2023	2024
FJ	22	39	37	23	7	18	11	24	48
ID	184,552	155,483	162,995	177,556	158,147	129,130	128,860	139,074	123,259
KI	0	0	0	0	0	0	0	0	0
PG	0	0	1	1	1	0	2	3	0
PH	35,190	40,902	39,379	30,377	38,003	35,728	35,258	36,578	54,106
SB	575	775	854	868	907	966	1,037	423	0
VU	0	1	0	0	0	0	0	0	0
TOTAL	220,339	197,200	203,266	208,825	197,065	165,842	165,168	176,102	177,413

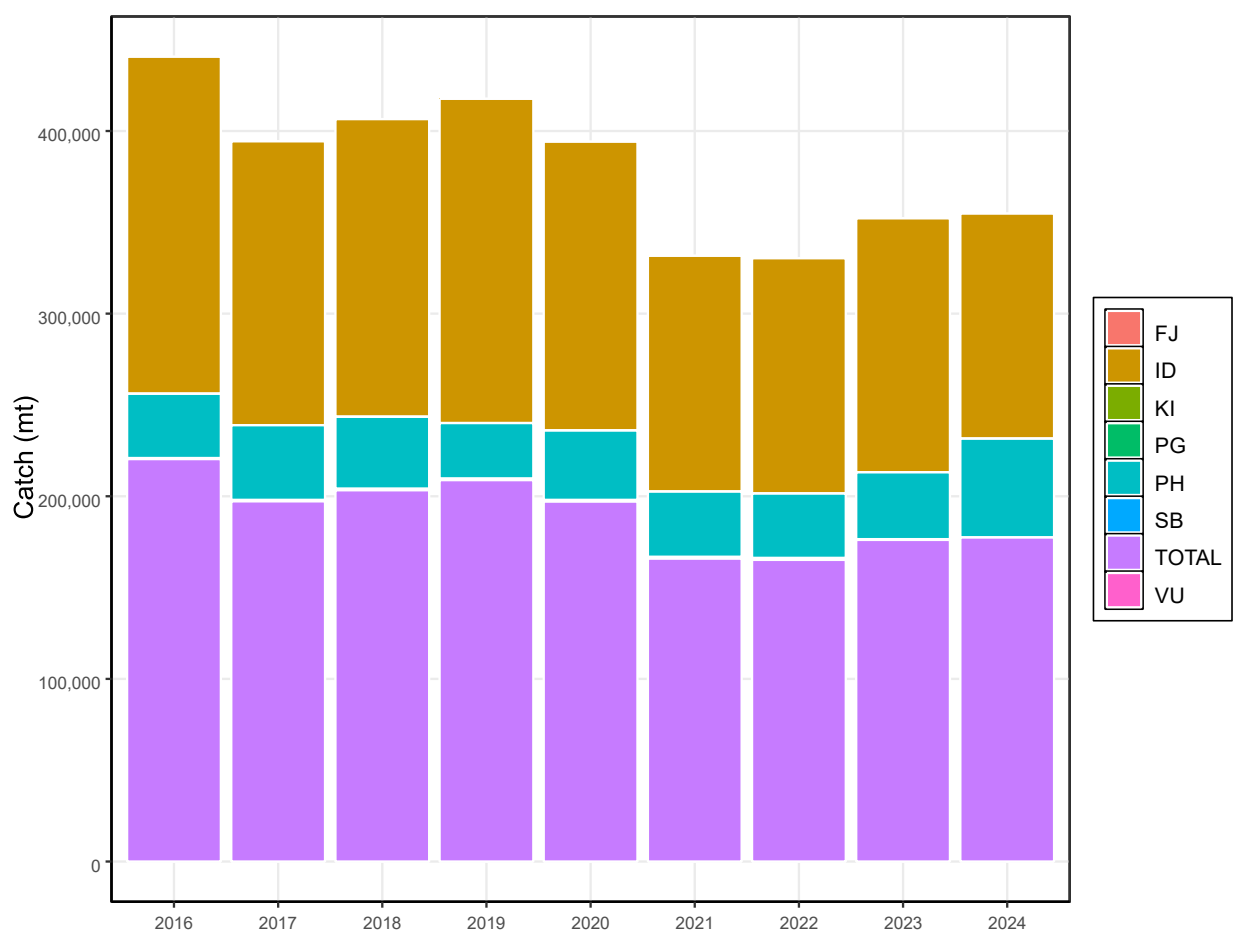


Figure 21: Skipjack tuna catch from archipelagic waters, by national jurisdiction (all gears combined, excluding purse seine)

Other Commercial Fisheries

Table 16: Total tropical tuna catch estimates for OTHER COMMERCIAL FISHERIES (excluding purse seine and longline) in the WCPFC Statistical Area, relevant to CMM 2023-01, and the limits specified within.

Gear	Flag	Limit	Catch_2024	Evaluation	Area_note	Effort_data	Notes
Handline	Indonesia			...	Within EEZ only, excluding AWs	No	5
Handline (large-fish)	Philippines	13,343	3,802	Within limit	Within EEZ only, excluding AWs	No	6
Pole-and-line	Indonesia	41,025	5,685	Within limit	Within EEZ only, excluding AWs	No	7
Pole-and-line	Japan	114,573	69,335	Within limit		Yes	2,4

Notes:

1. Source: Annual catch estimates; Philippines National Stock Assessment Project (NSAP data); Aggregate logsheet data. 2024 data are provisional.
2. The column labeled “CMM 2020-01” is the maximum value of either (i) the average total skipjack, yellowfin and bigeye tuna catch for 2001 -2004, or (ii) 2004.
3. The definition for “Commercial” fisheries, at this stage, includes all fisheries other than purse seine and longline fisheries, until otherwise advised. (Refer to Table 6b.).
4. Advice from Japan – ‘Paragraph 9 of CMM 2012-01 provides that this measure applies to all areas of high seas and EEZs in the Convention Area. Therefore, this paragraph does not apply to troll fishery, which operate within territorial sea. – Regarding pole-and-line fishery and purse seine north of 20N fishery JFA ensure that the total effort and capacity of these tuna fisheries shall not exceed the average level for the period 2001-2004 or 2004 under its licensing system. – Therefore JFA consider fulfilling this requirement. – JFA submits following information of pole-and-line fishery and purse seine north of 20N fishery as attached. On the other hand JFA does not agree with the Secretariat view to consider non provision of these data as a potential compliance issue because it is not required under this paragraph. Effort data (2001-2004 average, 2004 and 2013) Catch data (2001-2004 average, 2004 and 2013)’
5. Indonesia has advised that HANDLINE (hook-and-line) vessels that target small-fish at the surface should not be considered in the ‘Commercial’ category since they are artisanal/subsistence fisheries. However, Indonesia can only provide a catch estimate for the combined small-fish (artisanal) and large fish handline fishery and it is not yet possible to differentiate the large-fish handline catch estimate from this combined total. Also, it is not yet possible to separate out the catches of what might be considered the ‘commercial component’ of the handline fishery that are relevant to the tropical tuna measure - that is Indonesian waters outside archipelagic waters (AWs) and territorial seas (TS).
6. The large-fish handline catch for the Philippines outside of archipelagic waters and territorial seas has been determined from the proportion of annual tuna catch outside AWs/TS from data collected from Philippines National Stock Assessment Project (NSAP data : 1997-2024), and specifically based on landings by Philippines Fisheries Management Area (FMAs) and Fishing Ground. There is often considerable inter-annual variation in the activity of this fleet inside and outside archipelagic waters, mainly depending on weather and sea conditions.
7. The 2024 catch estimates for the Indonesia pole-and-line fishery is provisional

Table 17: Total tropical tuna catch estimates for OTHER FISHERIES (excluding purse seine and longline) in the WCPFC Statistical Area, which are exempt from CMM 2023-01 OTHER COMMERCIAL FISHERIES

Gear	Flag	2024	Average 2018-2024	Reason for exemption
Gillnet	INDONESIA	26,185	25,136	
Gillnet	JAPAN	76	102	Less than 2,000 mt
Gillnet	VIETNAM	13,326	20,644	Outside of the WCPFC Convention Area
Handline (large fish)	INDONESIA	162,728	46,005	Within territorial seas and/or archipelagic waters only
Handline (large fish)	PHILIPPINES	39,470	24,585	Within territorial seas and/or archipelagic waters only
Handline (large fish)	USA	266	430	Less than 2,000 mt
Handline (large fish)	VIETNAM	20,268	20,268	
Handline (small fish)	INDONESIA	20,250	103,997	Within territorial seas and/or archipelagic waters only
Handline (small fish)	PHILIPPINES	39,652	35,007	Within territorial seas and/or archipelagic waters only
Other	FRENCH POLYNESIA	1,362	1,115	Less than 2,000 mt and within territorial seas and/or archipelagic waters only
Other	INDONESIA	151,250	136,736	Within territorial seas and/or archipelagic waters only
Other	JAPAN	2,581	1,746	Less than 2,000 mt and within territorial seas and/or archipelagic waters only
Other	NIUE	15	6	Less than 2,000 mt and within territorial seas and/or archipelagic waters only
Other	PHILIPPINES	10,439	8,398	Within territorial seas and/or archipelagic waters only
Pole-and-line	INDONESIA	38,130	90,505	
Pole-and-line	JAPAN	87,269	73,045	
Ringnet	PHILIPPINES	35,270	29,855	
Troll	JAPAN	4,105	3,838	Within territorial seas and/or archipelagic waters only
Troll	NEW ZEALAND	6	8	Less than 2,000 mt and within territorial seas and/or archipelagic waters only
Troll	USA	512	811	Less than 2,000 mt and within territorial seas and/or archipelagic waters only

Notes:

1. Source: Annual Catch estimates. 2024 data are provisional.
2. Fisheries with average catches less than 2,000 mt of bigeye, yellowfin and skipjack tuna, have been excluded as per CMM 2018-01, CMM 2020-01 and CMM 2021-01 para 51.
3. The definition for ‘Commercial’ fisheries, at this stage, includes all fisheries other than purse seine and longline fisheries, until otherwise advised.
4. Indonesia has advised a range of their small scale/artisanal fisheries (e.g. troll, small-fish hook-and-line, gillnet) should not be considered in the category ‘Commercial’ Fisheries.
5. The Philippines has advised a range of their small scale/artisanal fisheries (e.g. troll, small-fish hook-and-line, gillnet, beach seine) operate wholly in their archipelagic waters and/or territorial seas and should not be considered in the category “Commercial” Fisheries.
6. The Indonesia and Philippines catch estimates exclude catches in archipelagic waters. Catches for some other fleets listed here are acknowledged to be in their archipelagic waters and/or territorial seas and will be confirmed with respective member countries (e.g. Kiribati)

Management Procedures and Fishery Monitoring

Table 18: CMM 2022-01 monitoring – fishery performance versus management procedure (MP) baselines. Archipelagic catches are for skipjack only, from all gear types.

Fishery component	Baseline		Actual levels			Avg 2024-2026	Notes
	Year(s)	MP output	2024	2025	2026		
Purse seine (incl AW) effort	2012	53,185	47,399.0				1
Pole and line effort	2001-2004	9,988	1,242.0				2
Domestic AW catch	2016-2018	384,897	348,039.7				3

Notes

1. Effort reported as fishing days; excludes domestic Philippine and Indonesia purse seine effort
2. Effort is represented as fishing days
3. Archipelagic skipjack catches (mt) including all gear types